

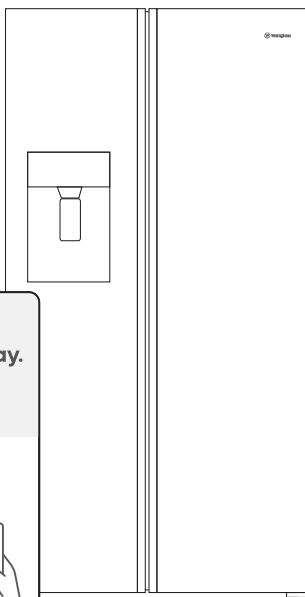


# User Manual

## Products:

WSE6670BA

WSE6670SA

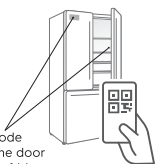


### Enjoy peace of mind. Register your appliance today.

Stay updated on better living services,  
safety notices and shop for accessories.

1. Open the camera app  
on your smartphone  
and point at the QR  
code to scan

Product Registration QR code  
is located on the front of the door  
or internal side wall of your fridge.



2. Tap the notification or link to open the  
registration form
3. Complete your details and enjoy peace  
of mind

# Contents

- 1. Important safety instructions ..... 4
- 2. Installing your new refrigerator..... 5
- 3. Refrigerator operation ..... 6
- 4. Refrigerator features..... 7
- 5. Using the control panel..... 8
- 6. Dispenser and Feature..... 10
- 7. Ice maker and water filter..... 11
- 8. Cleaning your refrigerator..... 12
- 9. Energy consumption ..... 12
- 10. Noises..... 13
- 11. Guidelines for water pipe installation and removal of ice maker..... 14
- 12. Water supply connection..... 15
- 13. Food storage guide..... 16
- 14. Troubleshooting/Water injection time adjustment..... 17

## HAPPY TO HELP

Thank you for choosing Westinghouse. We have designed this product to make your life simpler and deliver impeccable performance for many years. Please spend a few minutes reading this document to get the best from your new Westinghouse appliance.

### Visit our website to:



Get usage advice or service information:  
**[www.westinghouse.com.au](http://www.westinghouse.com.au)**



Register your product for better service:  
**[register.westinghouse.com.au](http://register.westinghouse.com.au)**



Buy Accessories, Consumables and Original spare parts for your appliance:  
**[shop.westinghouse.com.au](http://shop.westinghouse.com.au)**

## CUSTOMER CARE AND SERVICE

Always use original spare parts.

When contacting our Authorised Service Centre, ensure that you have the following data available: Model, PNC, Serial Number.

The information can be found on the rating plate which is located inside the product.

 **Warning / Caution-Safety information.**

 **General information and tips.**

 **Environmental information.**

Westinghouse is committed to continuous improvement, therefore product and user manual are subject to change without notice.

## Important safety instructions

Please read the user manual carefully and store in a handy place for later reference.

The symbols you will see in this booklet have these meanings:



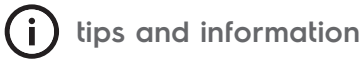
**warning**

This symbol indicates information concerning your personal safety



**caution**

This symbol indicates information on how to avoid damaging the appliance



**tips and information**

This symbol indicates tips and information about use of the appliance



**environmental tip**

This symbol indicates tips and information about economical and ecological use of the appliance

Meanings of symbols used in this manual are shown below:



This symbol indicates never to do this



This symbol indicates always do this



**warning**

- If pressurised aerosol containers bear the word 'flammable' and/or a small flame symbol, do not store them inside any refrigerator or freezer. If you do so, you may cause an explosion.
- This appliance is not intended for use by persons (including children) with reduced physical, sensory or mental capabilities, or lack of experience and knowledge, unless they have been given supervision or instruction concerning use of the appliance by a person responsible for their safety.
- Children should be supervised to ensure that they do not play with the appliance.
- When you dispose of your old refrigerators and freezers, remove any doors. Children can suffocate if they get trapped inside.
- This appliance contains insulation formed with flammable blowing gases. Avoid safety hazards by carefully disposing of this appliance.



Warning: Risk of fire / flammable materials

This appliance is intended to be used in household and similar applications such as

- staff kitchen areas in shops, offices and other working environments;
- farm houses and by clients in hotels, motels and other residential type environments;
- bed and breakfast type environments;
- catering and similar non-retail applications.



**warning**

- ✓ The appliance must be plugged into its own dedicated 220-240V, 50Hz AC electrical outlet.
- ✓ Ensure that the electric outlet is properly earthed to ground. Consult a qualified electrician if you are unsure.
- ✓ The plug must be accessible when the appliance is in position.
- ⊗ Do not use an extension cord or adapter plug.
- ✓ If the power cord is damaged, it must be replaced by the manufacturer, its service agent or similarly qualified persons to avoid a hazard.
- ✓ Unplug the appliance before cleaning and before changing the light bulb to avoid electric shock.
- ⊗ Never unplug the appliance by pulling on the power cord. Always grip the plug firmly, and pull straight out of the receptacle to prevent damaging the power cord.
- ✓ For optimal performance, it is recommended to install the product where the ambient temperature is between 10 to 43°C.
- ✓ Put the appliance in a dry place, avoiding areas of high moisture or humidity.
- ⊗ Don't put the appliance in frosty or unprotected areas, for example in a garage or on a verandah.
- ⊗ Don't put the appliance in direct sunlight.
- ⊗ Don't put the appliance near stoves, fires or heaters.
- ⊗ Do not use mechanical devices or other means to accelerate the defrosting process, other than those recommended by the manufacturer.
- ⊗ Do not damage the refrigerant circuit.
- ⊗ Do not use electrical appliances inside the food storage compartments of the appliance, unless they are of the type recommended by the manufacturer.
- ⊗ Do not store explosive substances such as aerosol cans with a flammable propellant in this appliance.
- ⊗ Always use the new hose set supplied with the appliance, never use old hose sets.
- ⊗ When positioning the appliance, ensure the supply cord is not trapped or damaged.
- ⊗ Do not locate multiple portable socket-outlets or portable power supplies at the rear of the appliance.

When correctly installed, your appliance should:

- have adequate clearance to the back and sides for air circulation (refer to page 4).
- be aligned to the surrounding cupboards.
- have doors that will self-close from a partially open position.



#### warning

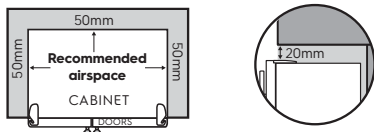
- Have the stability foot in place (see diagram on page 4) to prevent the appliance falling forward when a door with heavy food load is opened.

## Installing your new refrigerator

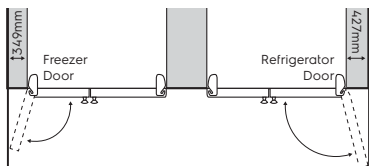
### Clearance around your refrigerator

Your Side by Side Refrigerator can be installed between cupboards or fixtures but you must consider the following spaces around the cabinet:

1. Allow a minimum of 50mm clearance on both sides.
2. Allow 50mm clearance at the back of the refrigerator.
3. Allow 20mm clearance above the hinge covers.



4. Allow a 349 or 427mm clearance on the hinge side of the doors, if you place the refrigerator next to the wall. This will make cleaning easier.



5. Make sure that cupboards or fixtures do not stick out further than the refrigerator cabinet.

Note: Refrigerator doors on all models are designed to sit proud of cabinetry (not flush).

### Installing your refrigerator

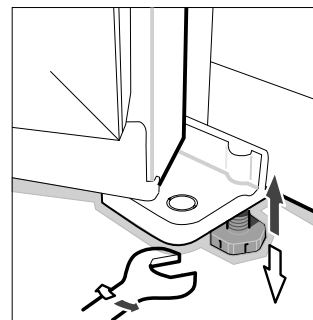
The appliance should arrive with the stability foot wound fully up so it will not interfere with the operation of the rollers (see diagram in Step 3 below).



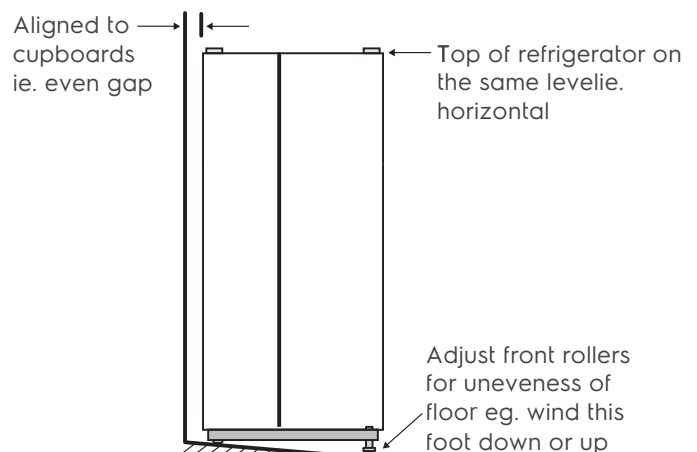
#### caution

The rollers are designed for forward or backward movement only. They are not castors. Moving the refrigerator sideways may damage your floor and the rollers.

1. Roll the refrigerator into its final position.
2. The top of the refrigerator should be tilted back by approximately 20mm. This will allow the doors to self-close providing a consistent door seal and stability when the doors are open.
3. When you have the appliance in its final position, it needs to be stabilized. Wind the stability foot down to the floor until it just makes contact with the floor. Whenever you need to move the appliance, be sure to wind the foot back up so that the appliance can roll freely and be sure to reset it when reinstalling. (The wrench opening size 30mm)



4. Check the alignment of the refrigerator to the surrounding cupboards. The top of the refrigerator should be on the same level from side to side (see diagram below). If you need to adjust the level, use the adjustable rollers as discussed in Step 3.



5. If the refrigerator rocks from one corner to the opposite rear corner, this means that the floor is uneven; you will need to put some packing under one of the rear rollers. You could use thin pieces of solid material, such as thin board, vinyl floor tiles or laminate. Place the packing so that it will sit under one of the rear rollers when the refrigerator is rolled into position.
6. You may now need to fine-tune the installation by repeating Steps 3, 4 and 5.
7. Whenever you need to move the refrigerator, be sure to wind the foot back up so that the refrigerator can roll freely.
8. Clean your refrigerator thoroughly following the instructions on page 9 and wipe off any dust that was accumulated during shipping.
9. Leave standing in stable upright position for 2-3 hours prior to turn "on".
10. Plug the refrigerator into the power point. Don't use a double adaptor. If you need to roll the refrigerator out to get at the power point, remember to raise the stability foot before you do so.
11. We recommend that you let your refrigerator run for two to three hours before you put any food in it. It will allow you to check that it is operating properly.

Your new refrigerator has been supplied with protective plastic film on the doors and cabinet, you can choose to remove this film as needed.

Congratulations! You have successfully installed your new refrigerator.



**caution**

Sufficient ventilation is crucial for best performance of the refrigerator, please do not block it.

### Refrigerator Operation

The refrigerator transfers heat from food placed inside the appliance to the outside air.

This process makes the rear, the sides and the area adjacent to the doors, particularly at initial start up, feel warm to hot, this is normal.

There is a cooling coil located behind the rear wall of the cabinet. This coil cools and removes moisture from the air. A fan then circulates cold, dry air throughout the cabinet.

Avoid placing food against air outlets as this will affect air circulation.

A light frosting may occasionally occur on the cold interior of the freezer when the door is opened frequently. This is normal and will disappear after a few days in most climates.

Make sure you fully close the freezer door after you load or remove food. If the door is left partly open, a heavy frost will coat the inside of the freezer. If a frost develops, remove it. Ensure to properly close the door, so the frost will not reoccur.

Your new energy efficient appliance uses a high-speed compressor and other energy efficient components that may produce different noises to your old appliance.

These sounds are normal and includes:

- compressor running noise.
- air movement noise from the small fan motor.
- occasional gurgling, similar to water boiling.
- a popping noise, heard during automatic defrosting.
- a clicking noise, just prior to the compressor starting up.

These noises are normal and will not cause the unit to alarm.

### Temperature Control

The factory default settings;

Refrigerator = 4°C Freezer = -18°C

If you want to change the temperature, follow the instructions in the section about the user interface for your model. Ensure that you make only small adjustments and wait 24 hours to see if it's correct to your liking.

Note: When you set a temperature, you set an average temperature for the whole refrigerator cabinet.

Checking the softness of ice cream is a good indication that your freezer is the right period, while checking the temperature of water kept in the refrigerator is a good way of checking the temperature of the food compartment.

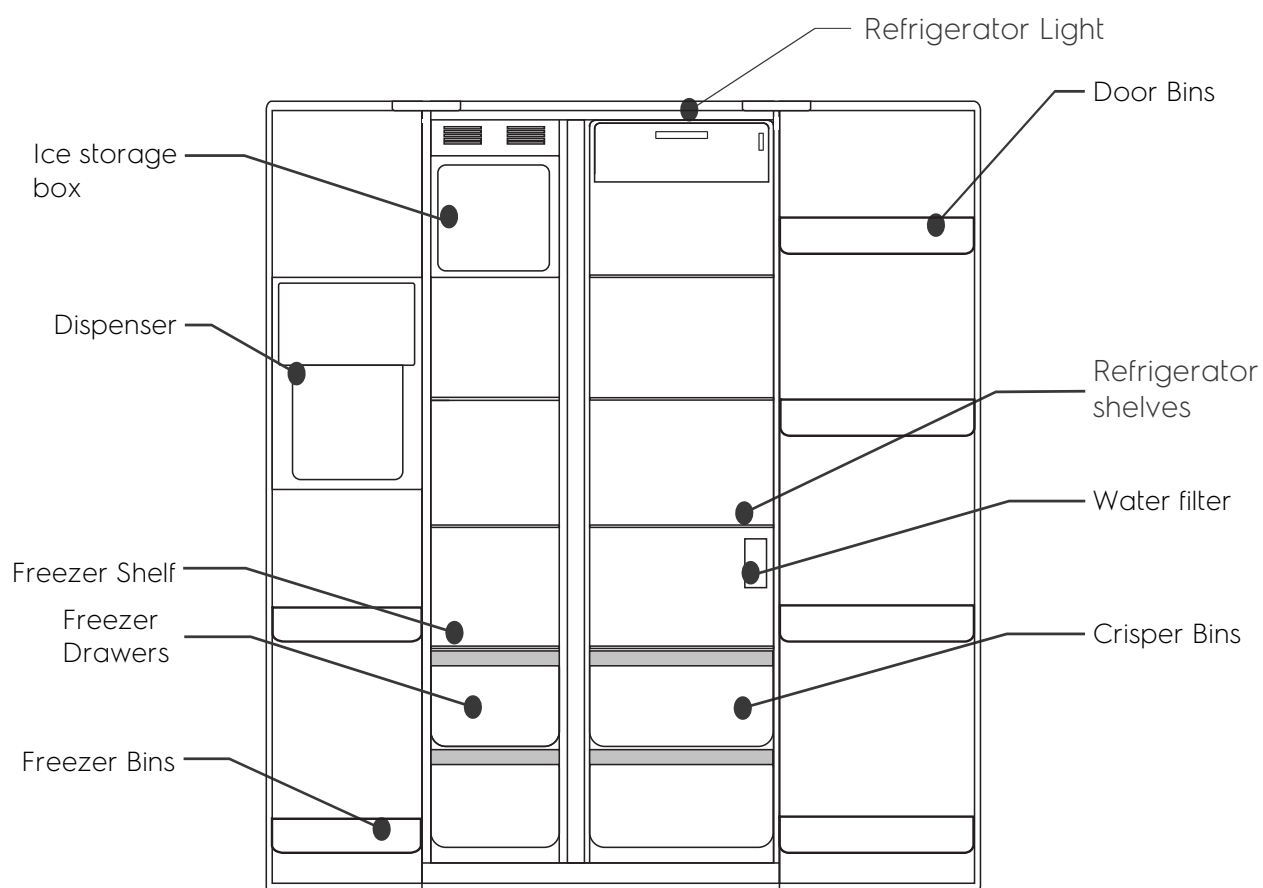
Temperature inside each compartment may vary, depending on how much food you store and where you place it.



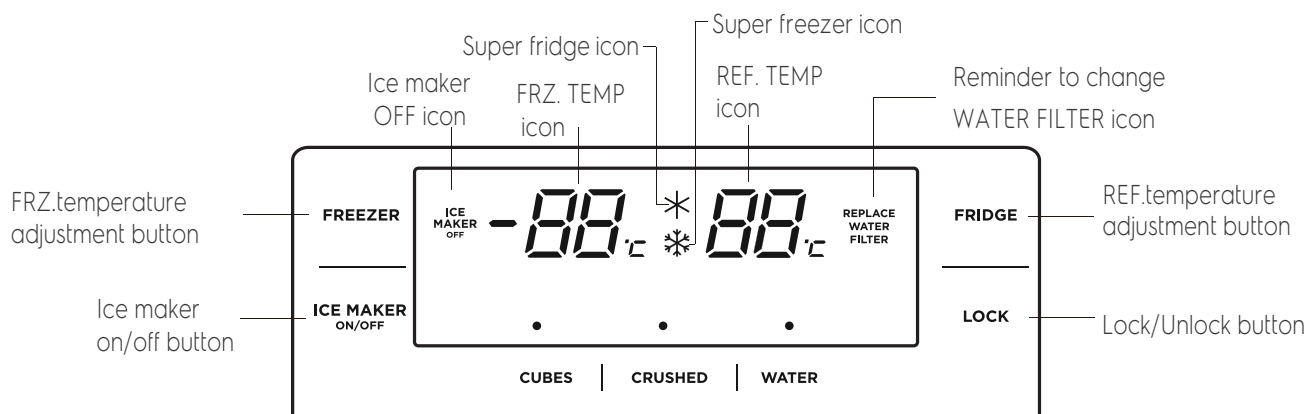
**caution**

This appliance can be used by children aged from 8 years and above and persons with reduced physical, sensory or mental capabilities or lack of experience and knowledge if they have been given supervision or instruction concerning use of the appliance in a safe way and understand the hazards involved. Children shall not play with the appliance. Cleaning and user maintenance shall not be made by children without supervision.

## Refrigerator features



## Using the control panel



### Function setting of the LED display

Note: the display will turn off after 20 seconds of inactivity, while the display will wake up if the button is touched again.



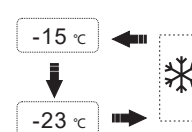
The default temperature of the freezer is -18°C. To change the temperature press the FREEZER button to cycle through the set temperatures.

-15°C ~ -16°C ~ -17°C ~ -18°C ~ -19°C ~ -20°C ~ -21°C ~ -22°C  
~ -23°C ~ -23°C+\* (Super freezer) ~ -15°C

FREEZER



Set Temperature



**CAUTION:** Do not put fresh foods directly on the frozen foods.



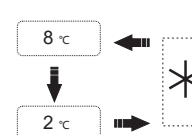
The default temperature of the fridge is 4°C. To change the temperature press the REFRIGERATOR button to cycle through the set temperatures.

8°C ~ 7°C ~ 6°C ~ 5°C ~ 4°C ~ 3°C ~ 2°C ~ 2°C+\* (Super fridge) ~ 8°C

FRIDGE



Set Temperature



LOCK



This product has button lock function. When lock the control panel, the other buttons are inoperable, if touch other buttons, REFRIGERATOR and FREEZER icon will flash.

To exit lock mode, press and hold the lock button for 3s.

### Auxiliary heating control switch \*



When weather is dry, for better energy, customer can press "Lock + Ice MAKER ON/OFF" and hold for 5 seconds to close auxiliary heating wire, when freezer temp display shows "OFF"; Press "Lock + Ice MAKER ON/OFF" again and hold for 5 seconds to activate auxiliary heating wire, when freezer temp display shows "ON".



### *Open door alarm*

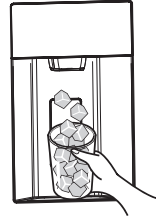
When the refrigerator door is open for above 1 min, the buzzer will alarm to remind users to close the door. After the door is closed, the alarm sound will stop automatically.

### *Ice and water dispenser*

Touch "CUBES ICE" button; if • indicator comes on, press and hold ice discharge button with the glass cup, and ice cubes will come out.

•      •      •  
CUBES | CRUSHED | WATER

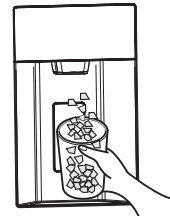
CUBES



Touch "CRUSHED ICE" button; if • indicator comes on, press and hold ice discharge button with the glass cup, and crushed ice will come out.

•      •      •  
CUBES | CRUSHED | WATER

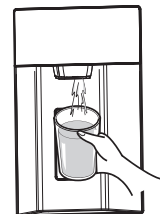
CRUSHED



Touch "WATER" button; if • indicator comes on, press and hold ice discharge button with the glass cup, and cold water will come out.

•      •      •  
CUBES | CRUSHED | WATER

WATER

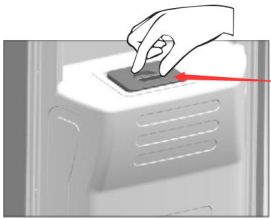


## Ice and water dispenser



**WARNING**

Do not take ice cubes with fragile containers to avoid injuries caused by breakage.  
Do not touch the ice outlet with fingers to prevent crushed



Thermal insulation cover

When a new refrigerator is started, attention shall be paid to the following:

When refrigerator is started, please take off the thermal insulation cover; while no use for a long time, please make sure the thermal insulation cover is refitted.

When taking water from a new refrigerator for the first time, press and hold the ice-water button, take the first 1-2 L of water and discard, and then take water for drinking;

When using the ice maker for the first time, the first box of ice is not suitable for eating from the point of sanitation.

### Other precautions:

Do not use too deep, narrow or soft cups, and put the cup close to the ice outlet to prevent ice cubes from jumping on the ground; keep a proper distance between the cup and ice outlet; if the cup is too close to the ice outlet, it may obstruct ice discharge; after the cup is full, release the ice discharge button to prevent ice cubes from spilling on the ground.

When taking ice or water, please keep the cup at the ice outlet for 2s ~ 3s after releasing the ice discharge button, because there may be ice or water coming out at the moment. After confirming there is no ice or water coming out, just take away the cup.

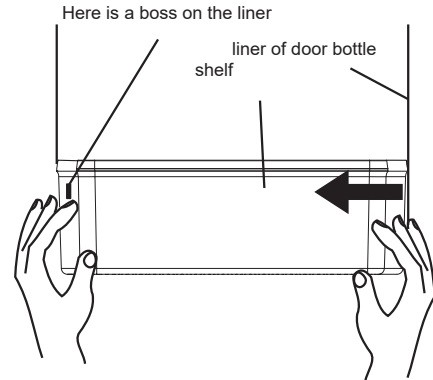
If using crushed ice function only, the ice outlet may be blocked by crushed ice, and remove residual crushed ice; when selecting ice cube after crushed ice, there may be a little crushed ice.

In case of power-off for a long time, ice in the ice storage box may melt into water which then flows into the freezing chamber; in this case, take out the ice storage box and discard ice, and wipe away water in the ice storage box and freezing chamber.

## Features of your refrigerator

This section tells you how to make the most of the many useful features and how to clean them.

### Door storage bins

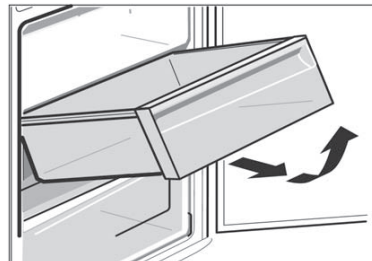


**Disassembly:** Hold both sides of the door bin with both hands. Push it from the side until dislodge from lugs and push it inward as the direction of the arrow. When pushing hard, please note that the buckle on the edge of bottle shelf is separated from the groove of the liner. Then door bin can be removed.

**Installation:** Hold both sides of the door bin with both hands. Install the door bin to one side of lug firstly, then push other side inward slightly until both lugs lock the Door Bin in place.

### Crisper Bin

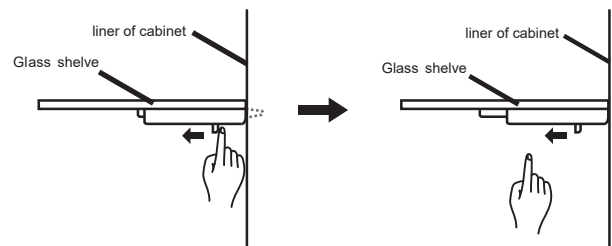
You can use the crisper bin to store vegetables, fruit or small goods. To remove, pull it forward then up and out.



### Glass Shelves

When removing the glass shelf, please press the movable pin under the shelf with both hands and push inward at the same time. Then the glass shelf will be removed.

Ensure locking pins on both sides securely lock and engage into the liner slot before using the glass shelf.



### LED lighting

Your refrigerator is fitted with long life LED lighting. In the unlikely event the LED lights should fail, then the LED lights should be serviced by the manufacturer, its service agent or similarly qualified technician. Refer to the warranty page for contact details.

## Automatic ice maker

The ice maker and ice storage box are arranged at the upper part of freezing chamber. When using the ice maker, please make sure that the ice maker switch is turned on and the water system is connected, and the ice maker will make ice automatically; when the ice storage box is full of ice, the ice making process will stop automatically.

The ice maker can make about 1.2 kg excluding first 7 hours ice every 24 hours when the freezer temperature is stabilized.

### CAUTION:

When the ice maker is making ice cubes, you may hear the beep from water valve, flowing sound of water into ice maker, and falling sound of ice cubes.

The catch basin shall be cleared timely to prevent water from spilling to destroy the floor.



### Ice maker storage box install and uninstall

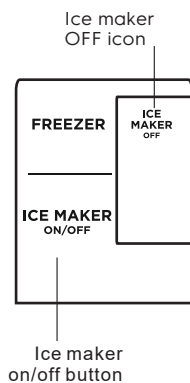


It is suggested to remove the ice maker storage box, clean, and then install when it is used for the first time or for a long time. Please power off the refrigerator before removal.

Take out the ice storage box, lift forcibly with both hands, and then pull it out; Clean, dry and then install.

When installing the ice storage box, align the bottom with the rails at both sides, put into the rails, and then push;

### Switch off the ice maker



#### Switch off the ice maker

- If the ice maker function is not needed for a long time, please switch off the ice maker temporarily;

**Hint:** This only disables the ice making function; the remaining ice in the ice storage box can be taken still, and water system operates normally.

- Press "ICE MAKER ON/OFF" button for 3s to switch off the ice maker, then the ICE MAKER ON/OFF icon is lighted.

- After the ice maker is turned off, the ice/water icon on the control panel is displayed still, and "CUBES/ CRUSHED /WATER" button is enabled, not affecting ice/water discharge.

### CAUTION:

Before switching off the ice maker, you must disconnect the water system of refrigerator several hours in advance; after switching off the ice maker, empty and clean the ice storage box, and then put it back.

When the ice maker function is enabled, if there is ice in the ice storage box still, ice may fall during self-check of the refrigerator.

### Water filter



#### CAUTION

The water filter should not be used on water that is micro biologically unsafe or with water of unknown quality. The service life of the filter may be reduced in water supplies that contain an excess of particles or other impurities. Reduced flow rate is an indication that a new filter is required. Failure to replace the filter when required can affect the function of the ice maker. Service calls caused by a failure to replace the filter are not covered by warranty.

Do not use the ice and water dispenser system in regions where the water quality is poor or where the water pollution is not confirmed.

Replacement water filters can be purchased from the Westinghouse After-Sales Service Centre or online on [shop.westinghouse.com.au](http://shop.westinghouse.com.au)

When the 'REPLACE WATER FILTER' indicator is illuminated, the water filter needs to be replaced. Change the water filter every 6 months. After replacing the water filter, press and hold the button 'WATER' for 5 seconds. The 'REPLACE WATER FILTER' icon will then disappear.

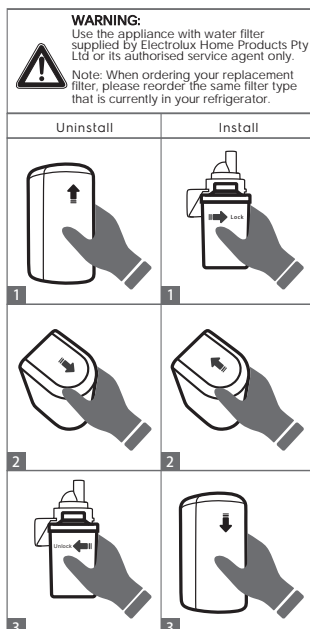
If the refrigerator is idle for a long time or drinking water has abnormal taste, clean the water system fully, and just take water from the ice and water dispenser for several minutes. If there is bad odor or taste, the filter shall be replaced.

#### Replace the filter

Before replacing the filter, you must disconnect the power plug of refrigerator or turn off the main power switch, and cut off the water source.

Unscrew and take down the filter according to the arrow indication on the filter; Insert the new filter, and tighten;

After replacing the filter, take some water from the ice and water dispenser to remove air from the water system; Discard the old water filter follow local recycling rules.



## Cleaning your refrigerator



### warning

Before cleaning: Turn appliance off at the power point, then remove power cord from socket. This will make sure there is no chance of getting an electric shock.

#### Doors and exterior

You should only clean the doors with lukewarm soapy water and a soft cloth. Rinse with clean water and then wipe the surface with clean water and a soft clean cloth to remove soap residue.



### caution

Do not use stainless steel cleaners, abrasive pads or other cleaners as they are likely to scratch the surface. Damage to this product after delivery is not covered by your warranty.

#### Interior

You should clean the appliance interior regularly. It will be easiest to clean when the food supply is low. Wash the interior with a soft cloth and use an unscented mild soap with lukewarm water. Thoroughly dry all surfaces and removable parts. Avoid getting water on appliance controls. If you have taken out any removable parts, replace them and switch the power on before re-stocking the appliance with food. Naturally, you should keep the interior of your appliance hygienic by promptly and thoroughly wiping up any food spills.

#### Door seals

Take care with Ensure to keep door seals clean. Sticky food and drink can cause seals to stick to the cabinet and tear when you open the door. Wash seal with a mild detergent and warm water. Rinse thoroughly and dry.



### warning

Never use hot water, solvents, commercial kitchen cleaners, aerosol cleaners, metal polishes, caustic or abrasive cleaners, or scourers to clean this appliance, as they will damage it. Many commercially available cleaning products and detergents contain solvents that will damage your refrigerator. When cleaning, use only a soft cloth with an unscented mild soap and lukewarm water.

## Energy consumption

The following guide will help you reduce the running cost of your new refrigerator. This will save you money and help conserve our valuable energy resources.

1. Do not block air vents. Doing so may cause the refrigerator to run longer and use more energy.
2. Do not set your freezer temperature too low. After 24 hours, ice cream should be firm but able to be scooped out with a spoon without bending the handle. If ice cream is firmer than this (or too soft), adjust the freezer temperature controls (see 'Set Temperature', page 7).
3. Ensure that the refrigerator doors seal properly as you close them.
4. Before you open the refrigerator doors, decide what you want to put in or take out. This will minimize the time you have the doors open.
5. It is best to have the refrigerator in a place that is out of direct sunlight and away from heating appliances of any kind. For example, do not place the refrigerator next to a cooker, stove or dishwasher.
6. Allow hot foods to cool to room temperature before you put them in your freezer.
7. Thaw frozen foods in the refrigerator section.
8. If you keep the freezer compartment filled to capacity, your food mass will help maintain the freezer temperature when you open the door.

#### Turning off the refrigerator

If you are leaving for a short holiday, there is no need to turn off your refrigerator.

If you are going on a long holiday and want to turn the refrigerator off, follow the steps below.

1. Take all the food out of the refrigerator and freezer compartments.
2. Switch off the refrigerator and remove the electric cord from the power point.
3. Clean the inside.
4. Leave the doors open. This prevents bacteria from growing and causing smells in the refrigerator.

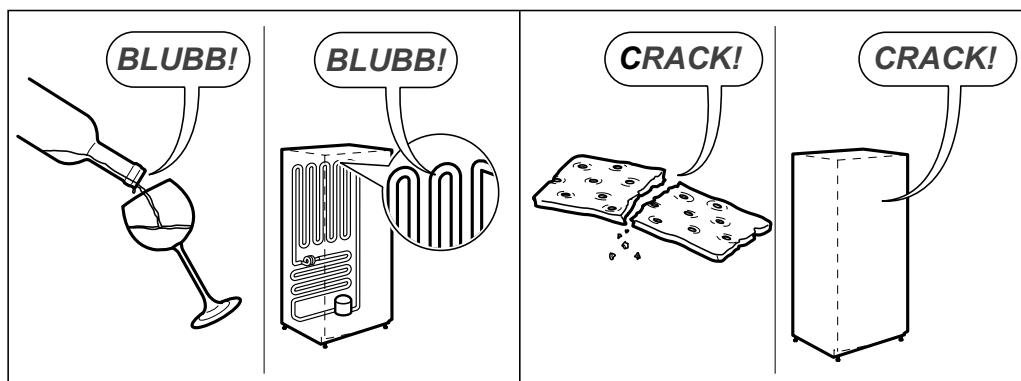
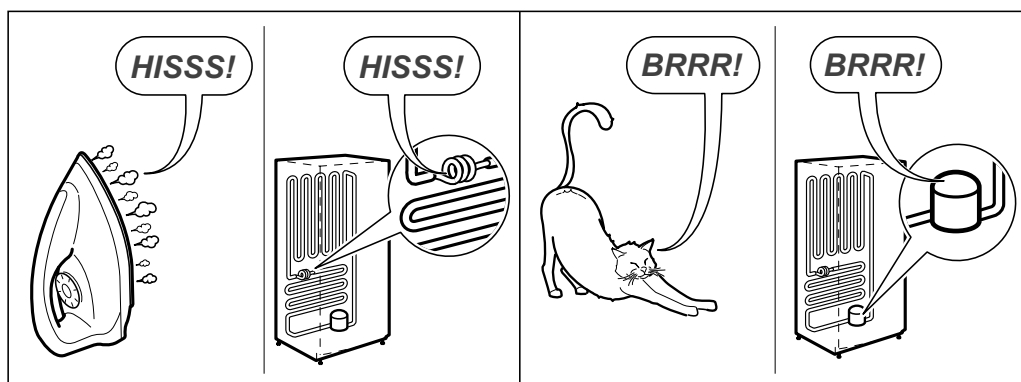
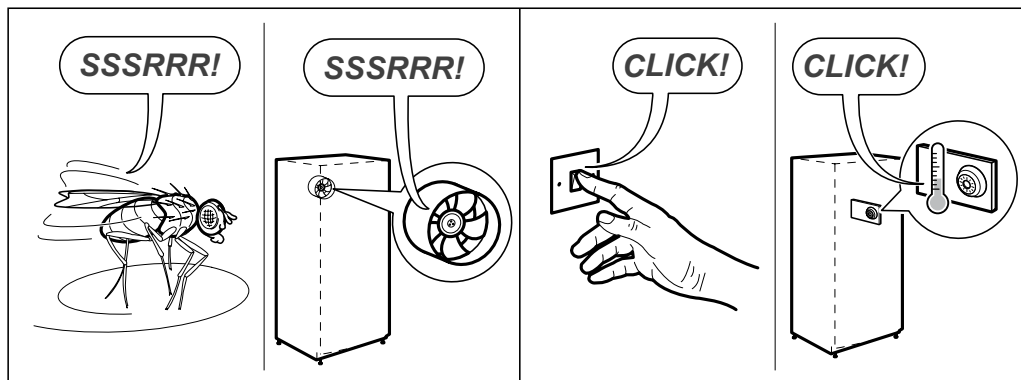
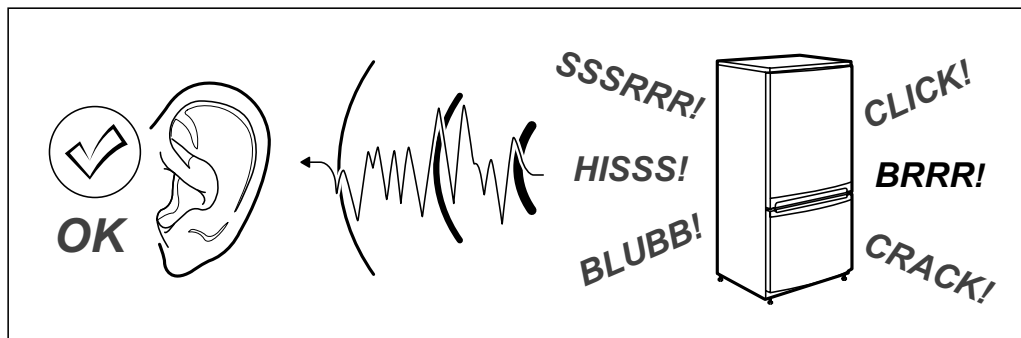
#### Power failure

If there is a power failure in your area, keep the door to the freezer closed. Most foods in your freezer will stay frozen for 24 hours.

# NOISES

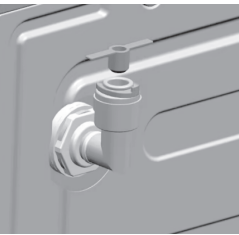
## Appliance noise

Your new refrigerator may make sounds that your old one didn't make. Because the sounds are new to you, you might be concerned about them. Most of the new sounds are normal. Hard surfaces, like the floor, walls and cabinets, can make the sounds seem louder than they actually are. The following describes the kinds of sounds and what may be making them."

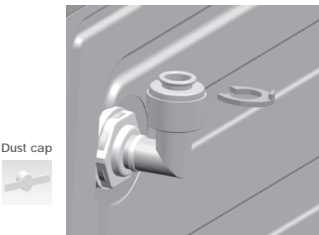


# Guidelines for water pipe installation and removal of ice maker

## Installation



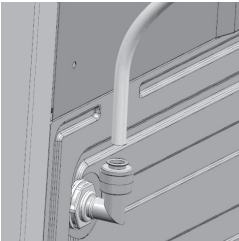
Step 1) Remove the dust cap



Dust cap

Security clamp

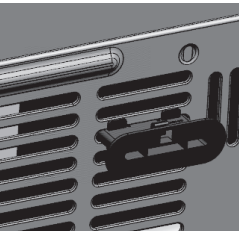
Step 2) Remove the security clamp



Step 3) Connect the PE soft tube



Step 4) Install the security clamp

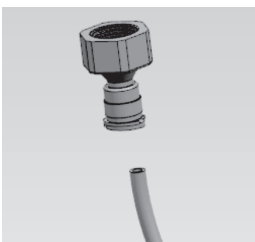


Step 5) Install block



Block

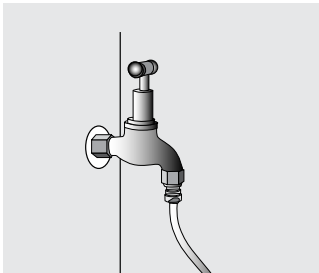
Step 6) Install PE soft tube (Sketch map)



Step 7) Make sure the end of the water pipe inserts into connector.



Step 8) Make sure will not loosen after insert.



Step 9) No tools shall be used, hand tighten ONLY to avoid damage or split the tap fitting is over tightened.

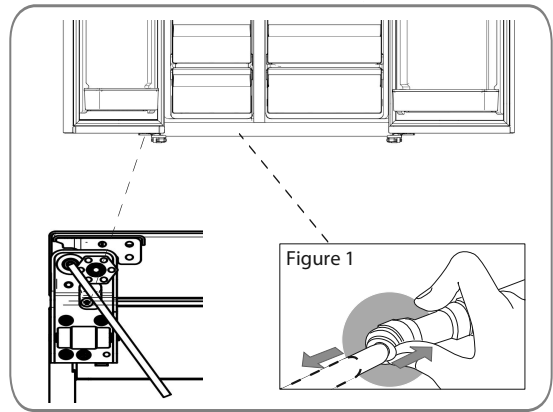
### Remarks:

- 1) Connected to water pipe to check if there is leakage after the above steps finished;
- 2) The above materials are put in the poly bag for instruction;
- 3) Any questions of installation, please contact with after sale service staff.

## Removal

Removing the left (freezer) door with water pipe connection Pull up the water feed tube while pressing the collet down (Figure 1) as shown in the figure below.

NOTE: If a tube end is deformed or abraded, trim the part away. Disconnecting the tube under the door causes about 0.13 gallons (0.5 liters) of water to flow out. Put a large container at the end of the tube to prevent water from draining onto the floor.



## Water supply connection

**WARNING:** Connect to potable water supply only.

The water supply system must be installed and connected by a professional technician.

Connect the refrigerator with the cold water pipe:

Min pressure: 140KPa or 20 PSI; Max pressure: 690KPa or 100 PSI;

When using the function of ice maker, please make sure that the tap water pipe is connected normally and the water valve is opened. Enough space shall be reserved for the faucet connecting water source.

After the refrigerator operates stably, the ice maker will make ice. Upon power-on for the first time, cold water is available after 5 hours since the refrigerator operates normally, and ice cubes or crushed ice is available after 12 hours.

The new hose-sets supplied with the appliances must be used and old hose-sets should not be reused.

Never connect the appliance to a hot water supply.

Do not use with water that is microbiologically unsafe or with water of unknown quality without adequate disinfection.

### **Automatic ice maker**

The refrigerator has the function of automatic ice making, and users can take ice cube, crushed ice and cold water through the door.

## Food storage guide

Category	Product	Refrigerator	Freezer	Storage tips
Meat	Sausages and mince	1-2 Days	2-3 Months	Keep cold meat at the back of the refrigerator where it is coldest.
	Chops and steak	3-4 Days	4-6 Months	
	Cold meats	3-5 Days	4-6 Months	Plastic can cause meat to sweat if stored in refrigerator for more than a day.
	Roasts	3-5 Days	12 Months	Roast can take up to 48 hours to defrost properly, transfer frozen roast to the refrigerator 2 days before use.
Poultry	Chicken	1-2 Days	2 Months	If poultry takes on a smell or colour you are unsure about it is best to throw it out.
	Roast Chicken	3-5 Days	12 Months	
	Eggs	6 Weeks	Not Suitable	Whole eggs are not suitable for freezing, slightly beaten eggs may be frozen for four months.
Seafood	Whole fish and fille	2-3 Days	2 Months	Store in an airtight container or foil.
	Lobster and crabs	1-2 Days	2 Months	
	Prawns	1-2 Days	2 Months	Never freeze prawns in salty water as this will dehydrate the flesh
Dairy	Milk	Until Expiry Date	Not Suitable	If dairy takes on a smell or colour and you are unsure about it, it is best to throw it out.
	Yoghurt	7-10 Days	Not Suitable	
	Hard Cheeses	2 Weeks – 2 Months	2 Months (Grated)	Depending on the variety hard cheese can last from 2 weeks to 2 months.
	Soft Cheeses	1-2 Weeks	Not Suitable	
	Butter	8 Weeks	12 Months	
Fruit& Vegetables	Every fruit and vegetable has a different shelf life. Some stay fresh for a couple of days e.g beans, others can last for a couple of months e.g. onions.		8-12 Months	Keep vegetables in the crisper and away from the air vents to avoid freezing.
			When freezing chop and blanch in small portions.	Don't wash fruit and vegetables before storing them in the refrigerator as this can make them susceptible to rotting.
Left overs	Homemade meals	3-4 Days	2-6 Months	Store in sealed container.
				Freeze meals in small portion sizes to limit wastage.



### IMPORTANT

Please note, use this information as a guide only, actual storage times will vary depending on how you use your refrigerator, climatic conditions and the freshness of the food.



## Troubleshooting

If you think something may be wrong with your refrigerator, you can carry out some easy checks before calling for service. You may locate the problem, sparing yourself from inconvenience and saving time and money.

Problem	Solution
When your appliance is not operating	• Make sure that the power cord is plugged into the power outlet properly and that the outlet is switched 'ON'.
	• Try running another appliance from the power outlet. If no power is coming from the outlet you may have blown a fuse or tripped a circuit of your household power supply.
	• Try adjusting the temperature control to a slightly "colder" position.
	• It is normal for the freezer fan NOT to operate during the automatic defrost cycle, or for a short time after the appliance is switched on.
When there is refrigerator/freezer noise	Modern refrigerators/freezers with increased storage capacity use high speed compressors. These can provide a seemingly high level of sound which is quite normal. Normal operational sounds include:
	• Occasional gurgling, similar to water boiling.
	• Air flow noise (air circulates because of a small fan).
	• A popping noise heard during automatic defrost.
If there are odours inside the appliance	Other strange sounds may mean that you need to check and take action. For example, noises may mean that:
	• The cabinet is not level.
	• The floor is uneven or weak.
	• Bottles are badly placed and rattling.
When the motor seems to run more than expected	• There are vibrations from an object on top of or behind or beside the refrigerator.
	• The back of the refrigerator cabinet is touching the wall.
	Remember it is quite normal for noise to seem louder when the refrigerator starts operating, or during quieter periods such as night time.
If the temperature in the refrigerator is too cold	• The interior may need cleaning.
	• Some food produce odours.
	• Some containers and wrapping can cause odours.
	• Ask yourself if the odour started about the same time you started storing something unusual.
If heavy frosting occurs in the freezer	Your new appliance provides you with large capacities in both the refrigerator section and the separate freezer. It is normal for the motor to operate frequently. However, to keep operation to a minimum, check the following:
	• Are doors kept open too long or too often?
	• Are controls set too cold? refer to "Using the control panel" for how to adjust.
	• Have large amounts of warm food just recently been stored? Summer, festive seasons and holidays usually mean a lot more work for your appliance.
If water drips on the floor	• If the day is hot or the room is very warm, the appliance will need to run more than normal.
	• The appliance will run more than normal just after you install it or when it has been turned off for a long time.
	• Refer to "Using the control panel" for how to adjust.
	• Increase the temperature to avoid high energy consumption.
Freezer Door opens after closing fridge door	Make sure you fully close the freezer and fridge doors. If the doors are left partly open a heavy frost will coat the inside of the freezer. If a frost develops, remove it. Make sure properly close the doors and the frost will not reoccur.
When temperature is hot/warm on the outside and rear side of the Fridge	The defrost water tray, (located at the back of the cabinet), may not be properly positioned, or the drain tube may not be properly positioned to direct water into this tray. You may need to pull the refrigerator away from the wall to check the tray and tube.
When temperature is hot/warm on the outside and rear side of the Fridge	It is normal for the freezer door to momentarily open and re-close when the food compartment door is closed. If the freezer door stays open, it indicates that the refrigerator cabinet needs to be tilted backwards a little further. If you call a service person to solve this problem, you will be charged for the cost of a service call, as this is not a warranty fault.
When temperature is hot/warm on the outside and rear side of the Fridge	In normal operation, the fridge transfers heat from inside to outside of the cabinet. It is normal for the side and rear of the fridge to feel warm/hot while operating. This will be more noticeable during start up and hot ambient conditions.

## Water injection time adjustment

If ice cube is too small, please turn up water injection time;  
If ice cube is bridged together, please turn down water injection time.

The default time is 5 seconds, but if another time is set, the power is switched back on after the power is off, the water injection time is resumed to previous saved water injection time.

Long press the "Crushed Ice" button 5S to open the water injection time adjustment, corresponding to the flashing of the display the current set value, click the "Crushed Ice" button to adjust time to 0.5S accumulation;  
Adjustment range: (0-10s) The corresponding value is (00-99), cyclic adjustment.

# Troubleshooting

## Button failure

Please check the control board whether the fridge under lock mode. When under lock mode, all buttons can't work.

## Low voltage, the compressor can't start

We recommended to connect to mains power supply 220-240V, 50HZ for optimal performance.

## Long time to start

When the ambient temperature too high, it will take longer time to reach the set temperature.

## Middle beams feel hot

Middle beams feel hot after a period of time of the appliance run, it belongs to the normal phenomenon.

## Dew drops

When external air flows into the cool inner surface of the fridge, dew drops can be formed. If the humidity of the installed location is high or during the rainy season, dew drops can form on the outer side of the fridge. This is a natural phenomenon that occurs during the humid weather. Wipe the water drops with a dry cloth.

## Noise

When you operate the fridge for the first time, the fridge will operate at high speed to cool fast and the sound can seem louder. When the internal temperature falls below a certain level, the noise will subside.

When the operation of the compressor is starting or ending; various parts expanding/contracting or various control devices operating or temperature change within the fridge, you will hear the sounds, these are normal sounds.

## Compressor hot

When working, the temperature of the compressor outer is more than 80 °C, please do not touch the compressor, it may cause serious injury.

## Compressor long time running

When the ambient temperature too high or put too much fresh foods into the fridge, it will take long time to cool down until the appliance run at the setting temperature.

## Abnormal odors in refrigerator

Odorous foods shall be packaged tightly; check for bad foods; the inside of refrigerator shall be cleaned.

## Ice maker failing to work normally

Check the ice maker switch is turned on; whether the freezing chamber door is closed or ajar;  
Whether the water valve is opened; whether water supply is obstructed, or water pressure is too low;  
Whether the temperature of freezing chamber is high due to just power connection or frequent use;

## Water leakage from ice outlet upon power-on for the first time

When the refrigerator is powered on for the first time, the system will execute self-check; at the moment, there may be a little water flowing out from the ice outlet of ice maker; this is self-check action and is normal.

## No ice out from dispenser

If the temperature of freezing chamber is high or the door is opened and closed frequently, ice cubes in the ice storage box may join together; take out ice cubes from the ice storage box, break them and then put back, and discard ice that is not broken;  
When the successive time of taking ice exceeds 1 minute, stop for 5 minutes and then take ice again;  
Whether the valve is opened, the ice maker starts to make ice after the water system works normally;  
The door of freezing chamber is not closed, make sure that all doors are closed.

## No water out from dispenser

When the ambient temperature is lower than - 2°C, no water will come out due to low- temperature icing of the water pipe, and try to take water after the ambient temperature rises;  
If you take water for above 3 minutes once, the refrigerator will execute automatic protection, release the ice discharge button for a while, and then take water again.

## Warm water out from dispenser

Because the water pipe has a section exposed outside the refrigerator, the temperature of the first cup of water taken may be high, just continue to take water to get cold water.

## Dispenser blocked

Ice melted is frozen on the screw rod, this is due to infrequent use or sharp temperature change. Empty the ice storage box, clean, wipe dry, and then put back.

## Ice frozen together when ice maker operates stably

If ice is not used regularly, ice cubes may freeze together; take out the frozen ice cubes from the ice storage box, dispose and allow new ice to be made.  
Risk of not replacing the filter: water dispensing speed will be reduced, ice harvest quantity will be reduced too.



FOR SALES IN AUSTRALIA AND NEW ZEALAND

APPLIANCE: WESTINGHOUSE REFRIGERATORS AND FREEZERS

**This document sets out the terms and conditions of the product warranties for Westinghouse Appliances. It is an important document. Please keep it with your proof of purchase documents in a safe place for future reference should there be a manufacturing defect in your Appliance. This warranty is in addition to other rights you may have under the Australian Consumer Law.**

**1. In this warranty:**

- (a) 'ACL' or 'Australian Consumer Law' means Schedule 2 to the Competition and Consumer Act 2010;
- (b) 'Appliance' means any Electrolux product purchased by you and accompanied by this document;
- (c) 'ASC' means Electrolux's authorised serviced centres;
- (d) 'Westinghouse' is the brand controlled by Electrolux Home Products Pty Ltd of 163 O'Riordan Street, Mascot NSW 2020, ABN 51 004 762 341 in respect of Appliances purchased in Australia and Electrolux (NZ) Limited (collectively "Electrolux") of 3-5 Niall Burgess Road, Mount Wellington, in respect of Appliances purchased in New Zealand;
- (e) 'Warranty Period' means the period specified in clause 3 of this warranty;
- (f) 'you' means the purchaser of the Appliance not having purchased the Appliance for re-sale, and 'your' has a corresponding meaning.

**2. Application:** This warranty only applies to new Appliances, purchased and used in Australia or New Zealand and is in addition to (and does not exclude, restrict, or modify in any way) other rights and remedies under a law to which the Appliances or services relate, including any non-excludable statutory guarantees in Australia and New Zealand.

**3. Warranty Period:** Subject to these terms and conditions, this warranty continues for in Australia for a period of 24 months and in New Zealand for a period of 24 months, following the date of original purchase of the Appliance. Specific components are warranted against manufacturing defects in Australia and New Zealand for the periods listed below;

- Compressor – Further 3 years
- External Condenser – Further 3 years
- Evaporator – Further 3 years
- Drier – Further 3 years

**4. Repair or replace warranty:** During the Warranty Period, Electrolux or its ASC will, at no extra charge if your Appliance is readily accessible for service, without special equipment and subject to these terms and conditions, repair or replace any parts which it considers to be defective. Electrolux may, in its absolute discretion, choose whether the remedy offered for a valid warranty claim is repair or replacement. Electrolux or its ASC may use refurbished parts to repair your Appliance. You agree that any replaced Appliances or parts become the property of Electrolux.

**5. Travel and transportation costs:** Subject to clause 7, Electrolux will bear the reasonable cost of transportation, travel and delivery of the Appliance to and from Electrolux or its ASC. Travel and transportation will be arranged by Electrolux as part of any valid warranty claim.

**6. Proof of purchase** is required before you can make a claim under this warranty.

**7. Exclusions:** You may not make a claim under this warranty unless the defect claimed is due to faulty or defective parts or workmanship. This warranty does not cover:

- (a) light globes, batteries, filters or similar perishable parts;
- (b) parts and Appliances not supplied by Electrolux;
- (c) cosmetic damage which does not affect the operation of the Appliance;
- (d) damage to the Appliance caused by:
  - (i) negligence or accident;
  - (ii) misuse or abuse, including failure to properly maintain or service;
  - (iii) improper, negligent or faulty servicing or repair works done by anyone other than an Electrolux authorised repairer or ASC;
  - (iv) normal wear and tear;
  - (v) power surges, electrical storm damage or incorrect power supply;
  - (vi) incomplete or improper installation;
  - (vii) incorrect, improper or inappropriate operation;
  - (viii) insect or vermin infestation;
  - (ix) failure to comply with any additional instructions supplied with the Appliance;

In addition, Electrolux is not liable under this warranty if:

- (a) the Appliance has been, or Electrolux reasonably believes that the Appliance has been, used for purposes other than those for which the Appliance was intended, including where the Appliance has been used for any non-domestic purpose;
- (b) the Appliance is modified without authority from Electrolux in writing;
- (c) the Appliance's serial number or warranty seal has been removed or defaced.

**8. How to claim under this warranty:** To enquire about claiming under this warranty, please follow these steps:

- (a) carefully check the operating instructions, user manual and the terms of this warranty;
- (b) have the model and serial number of the Appliance available;
- (c) have the proof of purchase (e.g. an invoice) available;
- (d) telephone the numbers shown below.

**9. Australia:** For Appliances and services provided by Electrolux in Australia: Electrolux goods come with guarantees that cannot be excluded under the Australian Consumer Law. You are entitled to a replacement or refund for a major failure and for compensation for any other reasonably foreseeable loss or damage. You are also entitled to have the Appliance repaired or replaced if the Appliance fails to be of acceptable quality and the failure does not amount to a major failure. 'Acceptable quality' and 'major failure' have the same meaning as referred to in the ACL.

**10. New Zealand:** For Appliances and services provided by Electrolux in New Zealand, the Appliances come with a guarantee by Electrolux pursuant to the provisions of the Consumer Guarantees Act, the Sale of Goods Act and the Fair Trading Act. Where the Appliance was purchased in New Zealand for commercial purposes the Consumer Guarantee Act does not apply.

**11. Confidentiality:** You accept that if you make a warranty claim, Electrolux and its agents including ASC may exchange information in relation to you to enable Electrolux to meet its obligations under this warranty.

**Important Notice**

Before calling for service, please ensure that the steps listed in clause 8 above have been followed.

<b>AUSTRALIA</b>	<b>FOR SERVICE</b> or to find the address of your nearest authorised service centre in Australia <b>PLEASE CALL 13 13 49</b> For the cost of a local call	<b>FOR SPARE PARTS</b> or to find the address of your nearest spare parts centre in Australia <b>PLEASE CALL 13 13 50</b> For the cost of a local call
<b>NEW ZEALAND</b>	<b>FOR SERVICE</b> or to find the address of your nearest authorised service centre in New Zealand <b>PLEASE CALL 0800 10 66 10</b>	<b>FOR SPARE PARTS</b> or to find the address of your nearest spare parts centre in New Zealand <b>PLEASE CALL 0800 10 66 20</b>

For more information on all Westinghouse appliances, or for dimension and installation information, call into your retailer, phone or email our customer care team or visit our website:

## AUSTRALIA

service: 13 13 49  
spare parts: 13 13 50  
email: [customercare@electrolux.com.au](mailto:customercare@electrolux.com.au)  
web: [westinghouse.com.au](http://westinghouse.com.au)

## NEW ZEALAND

phone: 0800 436 245  
email: [customercare@electrolux.co.nz](mailto:customercare@electrolux.co.nz)  
web: [westinghouse.co.nz](http://westinghouse.co.nz)

A10883186-A-482023



™ and Westinghouse are trademarks of Westinghouse Electric Corporation.  
Used under license. All Rights Reserved.

© 2017 Electrolux Home Products Pty Ltd.  
ABN 51 004 762 341