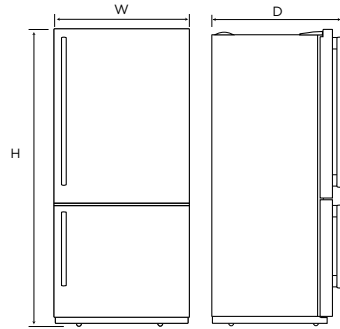
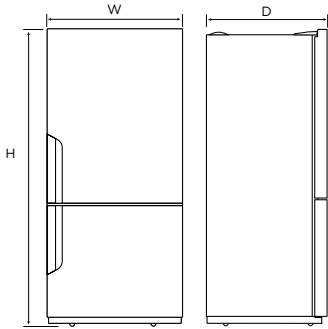


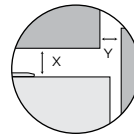
Large Bottom Mount

WBE5300BC/ SC/ WC
WBE4500BC/ SC/ WC

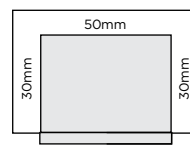
WBE5304BC/ SC
WBE4504BC/ SC



Minimum Recommended Airspaces



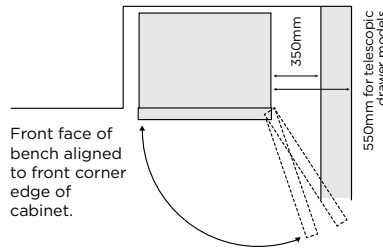
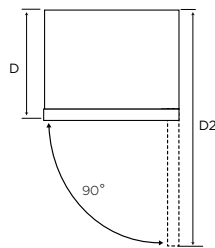
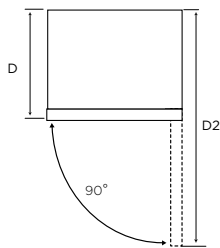
If you have a cupboard above the refrigerator with a rear gap of less than 100mm (Y), recommended minimum clearance at the top of the refrigerator increases from 30mm to 70mm (X).



Please note: Doors are designed to sit proud of cabinetry (not flush).

WBE5300BC/ SC/ WC
WBE4500BC/ SC/ WC

WBE5304BC/ SC
WBE4504BC/ SC



When positioned in a corner area, clearance of at least 350mm on the hinge side will allow the doors to open enough to enable the removal of bins and shelves. This required clearance increases to 550mm for those models with telescopic extension slide-out bins.

Dimensions	Product Height (H)	Product Width (W)	Product Depth (D)	Product Depth (D2) (Door Open)
WBE5300BC/ SC/ WC	1725	796	723	1457
WBE5304BC/ SC	1725	796	769	1457
WBE4500BC/ SC/ WC	1725	699	723	1360
WBE4504BC/ SC	1725	699	769	1360

Airspace	Side - both	Top	Behind
WBE5300BC/ SC/ WC	30	50	50
WBE5304BC/ SC	30	50	50
WBE4500BC/ SC/ WC	30	50	50
WBE4504BC/ SC	30	50	50

IMPORTANT

These dimensions are a guide only. All measurements are in millimetres (mm). For complete installation instructions, refer to the manual provided with product.
© 2021 Electrolux Home Products Pty Ltd. ABN 51 004 762 341. W_DIM_LBM_Oct21