



user manual

Dishwasher

WDU903

Electrolux. Thinking of you.

Westinghouse. We are part of the Electrolux family.

Share more of our thinking at www.electrolux.com

Contents

Safety information	2	Care and cleaning	13
Product description	4	What to do if...	14
Control panel	5	Technical data	15
Use of the appliance	6	Installation	16
Use of rinse aid	6	Water connection	18
Loading cutlery and dishes	7	Electrical connection	19
Use of detergent	9	Environment concerns	19
Select and start a washing program	11	Warranty	21
Washing programs	12		



Subject to change without notice



Safety information



For your safety and correct operation of the appliance, read this manual carefully before installation and use. Always keep these instructions with the appliance even if you move or sell it. Users must fully know the operation and safety features of the appliance.

Correct use

- Only use the appliance to clean household utensils that are suitable for dishwashers.
- Do not put solvents in the appliance. Risk of explosion.
- Put the knives and all items with sharp points in the cutlery basket with their points down. If not, put them in a horizontal position in the upper basket.
- Use only products specified for dishwashers (detergent, salt, rinse aid).
- If you open the door while the appliance is in operation, hot steam can escape. Risk of skin burns.
- Do not remove dishes from the dishwasher before the end of the washing program.
- When the washing program is completed, disconnect the mains plug from the mains socket and close the water tap.
- Only an authorised service engineer can repair this appliance. Use only original spare parts.
- Do not do repairs yourself to prevent injury and damage to the appliance. Always contact the Customer Care Centre.

General safety

- Dishwasher detergents are very dangerous. Be careful they do not touch eyes, mouth and skin. Keep the children away from the appliance when the door is open.
- Obey the safety instructions from the manufacturer of the dishwasher detergent to prevent burns to eyes, mouth and throat.
- Only put detergent in the dispenser before you start a washing program. Make sure that the detergent dispenser is empty at the end of the washing program.
- Do not drink the water from the dishwasher. Detergent residues can stay in your appliance.
- Always close the door when you do not use the appliance to prevent injury and not to stumble over the open door.
- Do not sit or stand on the open door.

Child safety

- Children or infirm persons must not use this appliance. They must get supervision to make sure that they do not play with the appliance.
- Keep all the packaging away from children. There is a risk of suffocation.
- Keep all detergents in a safe area. Do not let children touch the detergents.
- Keep the children and pets away from the appliance when the door is open.

Installation

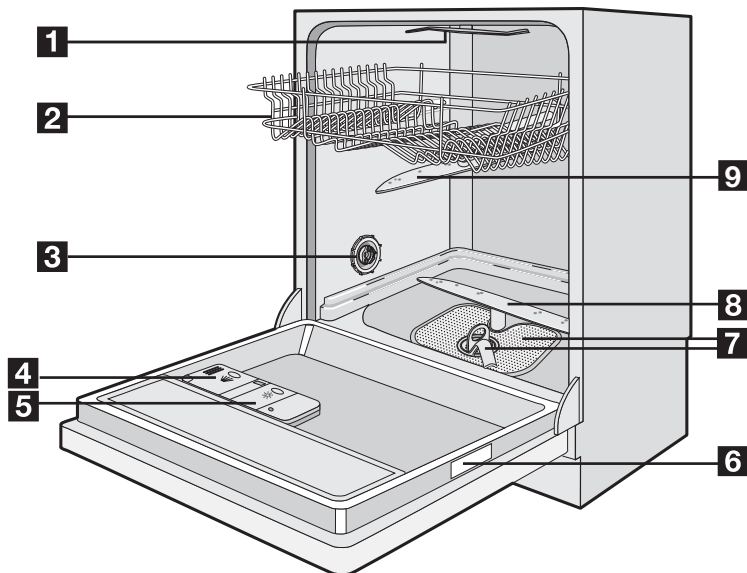
- Make sure that the appliance is not damaged because of transport. Do not connect a damaged appliance. If necessary, contact the supplier.
- Remove all packaging before first use.
- A qualified and competent person must do the electrical installation.
- A qualified and competent person must do the plumbing installation.
- Do not change the specifications or modify this product. Risk of injury and damage to the appliance.
- Do not use the appliance:
 - if the mains cable or water hoses are damaged,
 - if the control panel, worktop or plinth area are damaged so that you can get access to the inner side of the appliance.



Warning! Carefully obey the instructions for electrical and water connections.

- Contact your local Customer Care Centre.
- Do not drill into the sides of the appliance to prevent damage to hydraulic and electrical components.

Product description

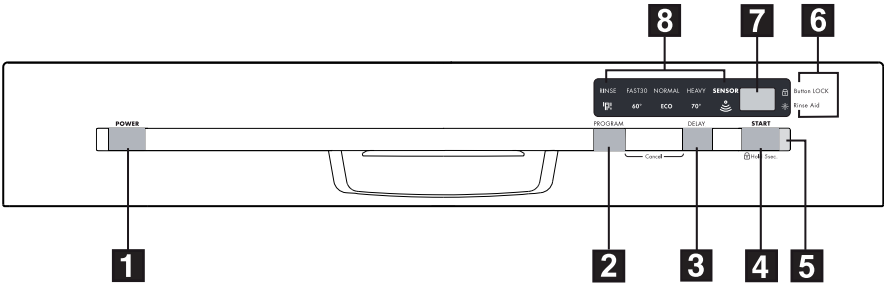


- 1** Ceiling spray arm
- 2** Upper basket
- 3** Air vent and water hardness dial (the dial is only functional for dishwashers with a water softener)
- 4** Detergent dispenser
- 5** Rinse aid dispenser
- 6** Rating plate
- 7** Filters
- 8** Lower spray arm

- 9** Upper spray arm

i This appliance has an internal light that comes on when the door opens and goes off when it is closed. Internal light equipped with LED lamp CLASS 1 in accordance with IEC 60825-1: 1993 + A1:1997+ A2:2001. If it is necessary to replace the light, contact your local Customer Care Centre.

Control panel



- 1 On/off button (POWER)
- 2 Program selection button (PROGRAM)
- 3 Delay start button (DELAY)
- 4 Start and Button lock button (START)
- 5 Start indicator light
- 6 Indicator lights
- 7 Digital display
- 8 Program indicator lights

Indicator lights	
Button LOCK	The indicator light comes on when the button lock function is active.
Rinse Aid	The indicator light comes on when it is necessary to fill the rinse aid container. Refer to 'Use of rinse aid'. The indicator light is off while a washing program operates.

Digital display

The display shows:

- program duration,
- remaining time to the end of the program,
- end of a washing program,
- number of hours in delay start,
- fault codes,
- Button Lock function. The digital display shows CL when this function is active.

Delay start button

Use the delay start button to delay the start of the washing program with an interval between 1 and 19 hours. Refer to 'Select and start a washing program'.

Button lock

The button lock function locks all buttons on the control panel while the washing program is in operation.

Follow these steps to set the Button lock function:

1. Switch on the appliance.

2. Set a washing program.
 3. If necessary, set the delay start. Refer to 'Select and start a washing program'.
 4. Press the Start button to start the washing program or the delay start.
 5. To activate the button lock function, press the Start button for approximately 5 seconds, or until the Button lock indicator light flashes.
 6. Button lock indicator light flashes for approximately 15 seconds.
 7. When the Button lock function is active the indicator light is on with a static light.
- If you press a button while Button Lock function is on, an audible signal indicates that buttons are locked.
- At the end of a washing program the Button lock function is deactivated by opening and closing the door or switching off the appliance.

Important! It is not possible to deactivate the Button lock function while a delay or washing program is in progress. To do this you must cancel the set program. Refer to 'Select and start a washing program'.

Setting mode

The appliance is in setting mode when all the program indicator lights are on.

Use of the appliance

Refer to specified instructions for each step of the procedure.

1. Fill the rinse aid dispenser with rinse aid.
2. Load cutlery and dishes into the dishwasher.

3. Set the correct washing program for the type of load and soil.
4. Fill the detergent dispenser with the correct quantity of detergent.
5. Start the washing program.

Use of rinse aid

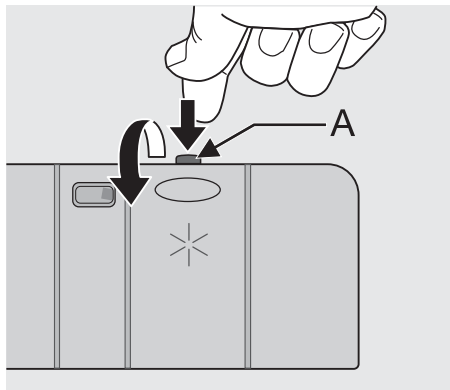
Caution! Only use rinse aid specified for dishwashers.

Do not fill the rinse aid dispenser with other products (e.g. dishwasher cleaning agent, liquid detergent). This can cause damage to the appliance.

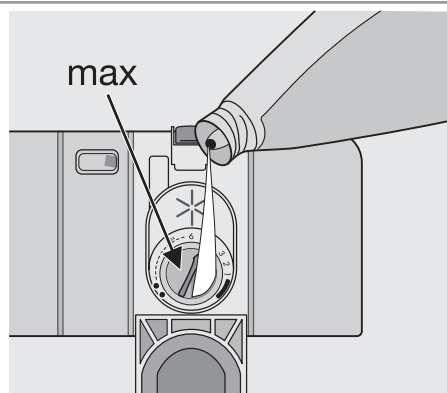
- i** Rinse aid makes it possible to dry the dishes without streaks and stains. Rinse aid is automatically added during the last rinsing phase.

Follow these steps to fill the rinse aid dispenser:

1. Press the release button (A) to open the rinse aid dispenser.



2. Fill the rinse aid dispenser with rinse aid. The mark 'max.' shows the maximum level.

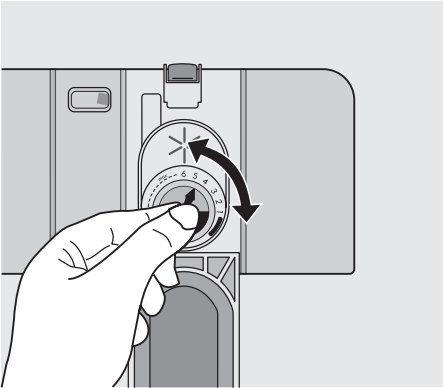


3. Remove the spilled rinse aid with an absorbent cloth to prevent too much foam during the subsequent washing program.
4. Close the rinse aid dispenser.

Adjusting the rinse aid dosage

The rinse aid is set at the factory at position 4.

You can set the rinse aid dosage between position 1 (lowest dosage) and position 6 (highest dosage).



Turn the rinse aid dial to increase or decrease the dosage.

- Increase the dosage if there are water droplets or limescale on the dishes.
- Decrease the dosage if there are streaks, whitish stains or bluish layers on the dishes.

i Wash hands to remove any residue of rinse aid from skin.

Loading cutlery and dishes

Helpful hints and tips

! **Caution!** Only use the appliance for household utensils that are suitable for dishwashers.

Do not use the appliance to clean objects that can absorb water (sponges, household cloths, etc.).

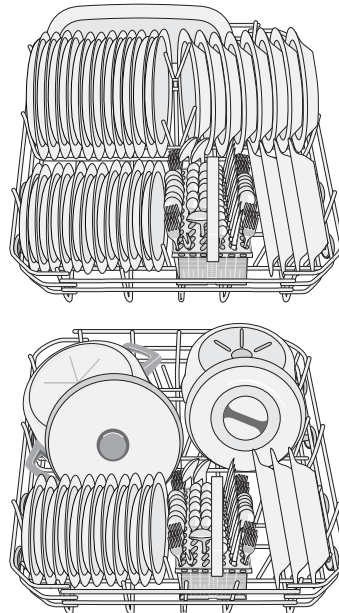
- Before you load cutlery and dishes, do these steps:
 - Remove all food remainings and debris.
 - Make burnt, remaining food in pans soft.
- While you load cutlery and dishes, do these steps:
 - Load hollow items (e.g. cups, glasses and pans) with the opening down.
 - Make sure that water does not collect in the container or in a deep base.
 - Make sure that cutlery and dishes do not lie inside one another.
 - Make sure that cutlery and dishes do not cover other cutlery and dishes.
 - Make sure that glasses do not touch other glasses.
 - Put small objects in the cutlery basket.
- Plastic items and pans with non-stick coatings can retain water droplets. Plastic items do not dry as well as porcelain and steel items.
- Put light items in the upper basket. Make sure that the items do not move.

! **Caution!** Make sure that the spray arms can move freely before you start a washing program.

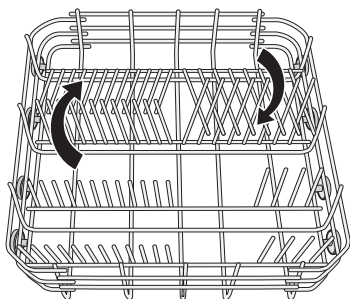
! **Warning!** Always close the door after you load or unload the appliance. An open door can be dangerous.

Lower basket

Put saucepans, lids, plates, salad bowls and cutlery in the lower basket. Arrange service dishes and large lids around the edge of the basket.



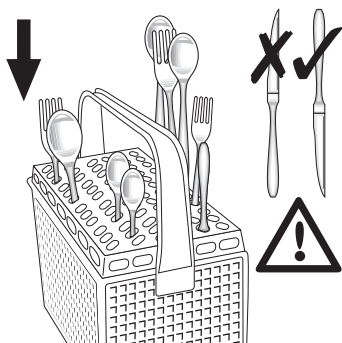
The rows of prongs in the lower basket can be adjusted flat to load pots, pans and bowls.



Cutlery basket

Warning! Do not put long-bladed knives in a vertical position. Arrange long and sharp cutlery horizontally in the upper basket. Be careful with sharp items.

Use the cutlery grid for best washing results. If the dimensions of the cutlery prevent the use of the cutlery grid, you can remove it. Put forks and spoons with the handles down. Put knives with the handles up.

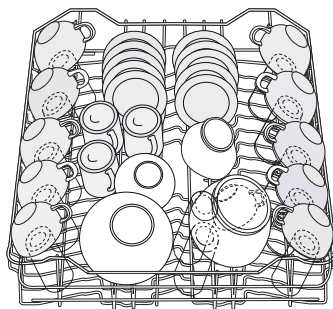


If the points of the knives or other thin items come out from the bottom of the basket, they can prevent the rotation of the lower spray arm. Put knives and other thin items with the handles down.

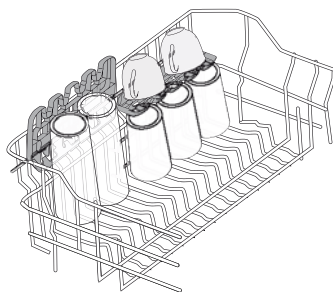
Mix spoons with other cutlery to prevent them nesting together.

Upper basket

The upper basket is for saucers, salad bowls, cups, glasses, pots and lids. Arrange the items to let water touch all surfaces.



Put glasses with long stems in the cup racks with the stems up. For longer items, fold the cup racks up.



Adjustment of the height of the upper basket

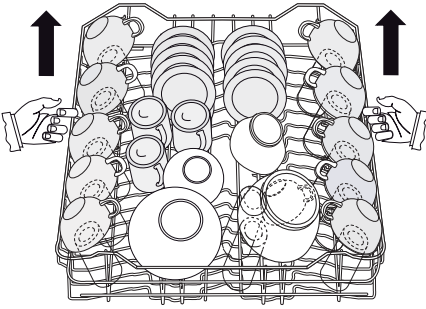
If you put large plates in the lower basket, first move the upper basket to the upper position.

Maximum height of the dishes in the lower basket

Upper position	31 cm
Lower position	27 cm

Follow these steps to move the upper basket to the upper position:

1. Pull the basket out until it stops.
2. Carefully lift the two sides until the mechanism is engaged and the basket is stable.



Do these steps to move the upper basket to the lower position:

1. Pull the basket out until it stops.
2. Carefully lift the two sides upwards.
3. Hold the mechanism and guide it back down slowly.



Caution!

- Do not lift or lower the basket on one side only.
- If the basket is in the upper position, do not put cups on the cup racks.

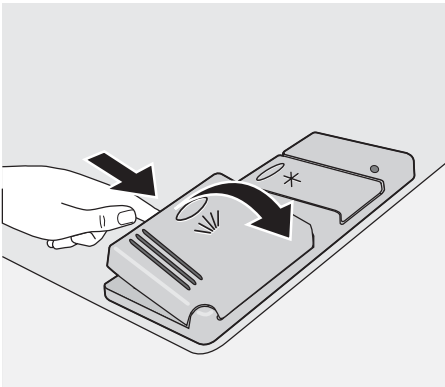
Use of detergent

- i** Only use detergents (powder, liquid or tablet) that are suitable for dishwashers. Follow the data on the packaging:
- dosage recommended by the manufacturer,
 - storage recommendations.

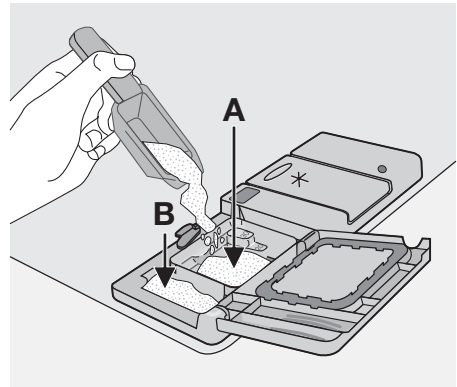
- 🌿** Do not use more than the correct quantity of detergent to decrease pollution.

Follow these steps to fill the detergent dispenser:

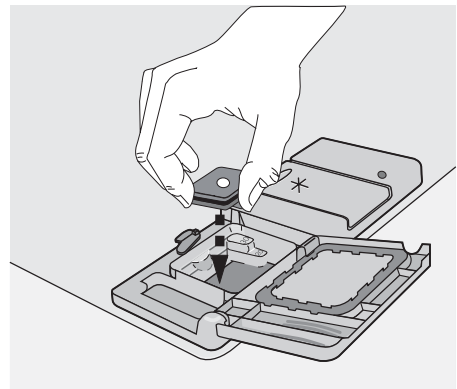
1. Open the lid of the detergent dispenser.




2. Fill the detergent dispenser (A) with detergent. The marking shows the dosage:
20 = approximately 20 g of detergent
30 = approximately 30 g of detergent.



3. If you use a washing program with prewash, put more detergent in the prewash detergent compartment (B).
4. If you use detergent tablets, put the detergent tablet in the detergent dispenser (A).



5. Close the lid of the detergent dispenser. Press the lid until it locks into position.

 Different brands of detergent dissolve in different times. Some detergent tablets do not have the best cleaning results during short washing programs. Use long washing programs when you use detergent tablets to fully remove the detergent.

Use of combi detergent tablets

These products are detergents with a combined cleaning and rinsing functions. They can contain also other cleaning agents.


Refer to the instructions from the manufacturer for the use of these products.

With tablets that contain rinse aid:

- set the lowest position for the rinse aid dosage,
- do not put rinse aid in the rinse aid dispenser. In this condition rinse aid indicator light is always on when you switch on the appliance.

Do these steps if the drying results are not satisfactory:

1. Fill the rinse aid dispenser with rinse aid.
2. Set the rinse aid dosage to position 2.

 If you go back to use normal detergents again, fill the rinse aid dispenser and adjust the rinse aid dosage.

Select and start a washing program

1. Close the appliance door.
2. Press the on/off button.
3. Make sure that the appliance is in setting mode.
4. Press one of the program buttons. Refer to the 'Washing programs' chart for program details.
 - The indicator light of the selected program stays on. All other program indicator lights go off.
 - The start indicator light flashes.
 - The flashing digital display shows the program duration.
5. Press the start button. The washing program starts automatically.
 - The start indicator light comes on with a static light.

i The washing program only starts after you press the start button. Until then it is possible to modify the settings.

i When the washing program operates, you cannot change the program. Cancel the washing program. Refer to 'Cancelling a washing program'.

Select and start a washing program with delay start

1. Press the on/off button.
2. Set a washing program.
3. Press the delay start button until the display shows the necessary delay start of the washing program.
4. Press the start button.
 - The countdown starts. The display shows remaining time to the start of the washing program.
 - When the countdown is completed, the washing program starts automatically.

i If you open the door during the countdown, this will interrupt the countdown. When you close the door again, the countdown continues from the point of interruption.

Cancelling delay start

1. Press and hold at the same time the program selection button and the delay start button until all the program lights come on.

Release the two buttons, the delay start has been cancelled.

- When you cancel delay start, you also cancel the washing program.

2. Set a new washing program.

⚠ Warning! Only interrupt or cancel a washing program if necessary. Attention! Open the door carefully. Hot steam and water can escape.

Interrupting a washing program

Open the door.

- The program stops.

Close the door.

- The program continues from the point of interruption.

Cancelling a washing program

1. Press and hold at the same time the program selection button and the delay start button until all the program lights come on
2. Release the two buttons, the washing program has been cancelled.

At this point, you can follow these steps:

1. Switch off the appliance.
2. set a new washing program.

Fill the detergent dispenser with detergent before you set a new washing program.

End of the washing program

The washing program is complete when:

- The display shows 0.

1. Switch off the appliance.

2. Open the door.

- For better drying results, keep the door ajar for some minutes before you remove the dishes.

Let the dishes cool down before you remove them from the appliance. Hot dishes are easily damaged.

Turbo dry

Turbo dry consists of a fan that condenses water vapour from the cabinet, ensuring optimum drying performance and avoiding residual steam recondensing on the dishes as water droplets.



If you press the on/off button or open the door during the 20 minutes when turbo drying is in operation, you will deactivate the device.

Removing the load

- First remove items from the lower basket, then from the upper basket.
- There can be water on the sides and door of the appliance. Stainless steel becomes cool more quickly than the dishes.

Washing programs



Washing programs

Program	Degree of soil	Type of load	Program description
RINSE 	Any	partial load (to be completed later in the day).	1 cold rinse (to prevent food scraps to bond). Detergent is not necessary with this program.
FAST30 60° ¹⁾	Normal or light soil	Crockery and cutlery	Main wash up to 60°C Final rinse
NORMAL ECO ²⁾	Normal soil	Crockery and cutlery	Prewash Main wash up to 50°C 1 intermediate rinse Final rinse Drying
HEAVY 70°	Heavy soil	Crockery, cutlery, pots and pans	Prewash Main wash up to 70°C 2 intermediate rinses Final rinse Drying
SENSOR 	Any	Crockery, cutlery, pots and pans	Prewash Main wash up to 50°C or 65°C 1 or 2 intermediate rinses Final rinse Drying

1) This is the perfect daily program to clean a partial load. Ideal for a family of 4 persons who only want to load breakfast and dinner crockery and cutlery.

2) Test program for test institutes. Please refer to separate leaflet supplied, for test data.

Consumption values

Program	Duration (in minutes) ¹⁾	Energy (in kWh)	Water (in litres)
RINSE 	-	0,1	4
FAST30 60°	-	0,9	9
NORMAL ECO	-	0,8 - 0,88	11 - 12
HEAVY 70°	-	1,8 - 2,0	23 - 25
SENSOR 	-	1,1 - 1,8	12 - 25

1) The digital display shows the programme duration.

-  The pressure and temperature of the water, the variations of power supply
- and the quantity of dishes can change these values.

Care and cleaning

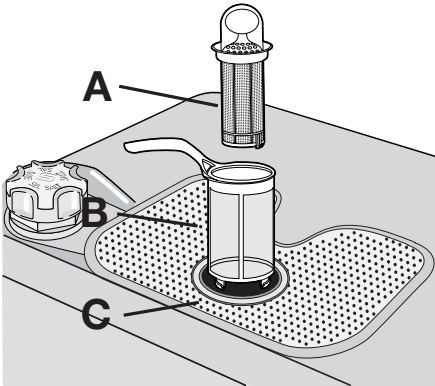
Warning! Switch the appliance off before you clean it.

Cleaning the filters

Caution! Do not use the appliance without the filters. Make sure that the installation of the filters is correct. Incorrect installation will cause unsatisfactory washing results and damage to the appliance.

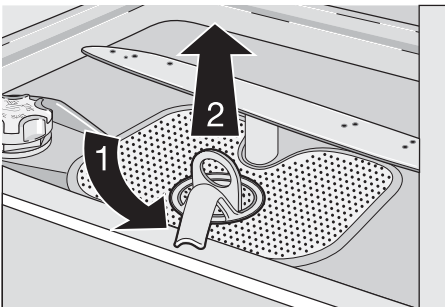
If necessary, clean the filters. Dirty filters decrease the washing results. The dishwasher has three filters:

1. coarse filter (A)
2. microfilter (B)
3. flat filter (C)



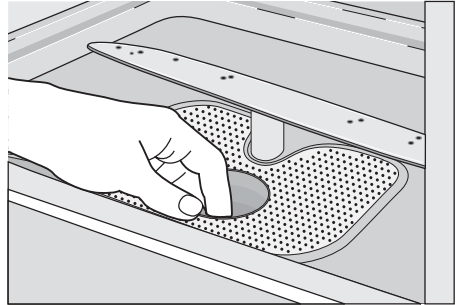
Follow these steps to clean the filters:

1. Open the door.
2. Remove the lower basket.
3. To unlock the filter system, turn the handle on the microfilter (B) approximately 1/4 anticlockwise.



4. Remove the filter system.

5. Hold the coarse filter (A) by the handle with the hole.
6. Remove the coarse filter from the microfilter.
7. Remove the flat filter (C) from the bottom of the appliance.



8. Clean the filters below running water.
9. Put the flat filter (C) in the bottom of the appliance.
10. Put the coarse filter (A) in the microfilter (B) and push the filters together.
11. Put the filter system in position.
12. To lock the filter system, turn the handle on the microfilter (B) clockwise until it locks in position.
13. Install the lower basket.
14. Close the door.

i Do not remove the spray arms.

If the holes in the spray arms become clogged, remove remaining parts of soil with a cocktail stick.

External cleaning

Clean the external surfaces of the appliance and control panel with a damp soft cloth. Only use neutral detergents. Do not use abrasive products, scouring pads or solvents (acetone, trichloroethylene etc.).

Internal cleaning


Do an inspection at intervals of 3 months. Set a washing program for heavily soiled dishes. Use detergent, but do not put dishes in the appliance.

Long periods of non-operation

Do these steps when you do not use the appliance for a long period:

1. Disconnect the mains plug from the mains socket.
2. Close the water tap.
3. Keep the door open to prevent unpleasant smells.
4. Keep the inner side of the appliance clean.

Frost precautions

 **Caution!** Do not install the appliance where the temperature is below 0 °C. The manufacturer is not responsible for damage because of frost.

If not possible, empty the appliance and close the door. Disconnect the water inlet hose and remove water from the water inlet hose.

Moving the machine

Do these steps to move the appliance:

1. Disconnect the mains plug from the mains socket.
2. Close the water tap.
3. Remove the appliance and the hoses.
4. Do not tilt the appliance during transport.

What to do if...

The appliance does not start or stops during operation.
If there is a fault, first try to find a solution to the problem yourself. Refer to 'What to do

if...'. If you cannot find a solution to the problem yourself, contact your dealer or the Customer Care Centre.

Fault code and malfunction	Possible cause and solution
<ul style="list-style-type: none">the digital display shows ,10 The appliance does not fill with water	<ul style="list-style-type: none">The water tap is blocked or restricted with limescale. Clean the water tap.The water tap is closed. Open the water tap.The filter in the water inlet hose is blocked. Clean the filter.The installation of the water inlet hose is not correct. The hose can be kinked or squashed. Make sure that the installation is correct.
<ul style="list-style-type: none">the digital display shows ,20 The appliance will not drain	<ul style="list-style-type: none">There is a blockage in the sink spigot. Clean the sink spigot.The installation of the water drain hose is not correct. The hose can be kinked or squashed. Make sure that the installation is correct.
<ul style="list-style-type: none">the digital display shows ,30 The anti-flood device operates	<ul style="list-style-type: none">Close the water tap and contact your Customer Care Centre.
The program does not start	<ul style="list-style-type: none">The appliance door is not closed. Close the door.Mains plug is not connected. Plug-in appliance to the mains.The fuse has blown out in the household fuse box. Replace the fuse.Delay start is set. Cancel the delay start to start the program immediately.

After the check, switch on the appliance. The program continues from the point of interruption. If the malfunction shows again, contact your Customer Care Centre.
These data are necessary to help you quickly and correctly:

- Model (Mod.)

- Product number (PNC)
- Serial number (S.N.)

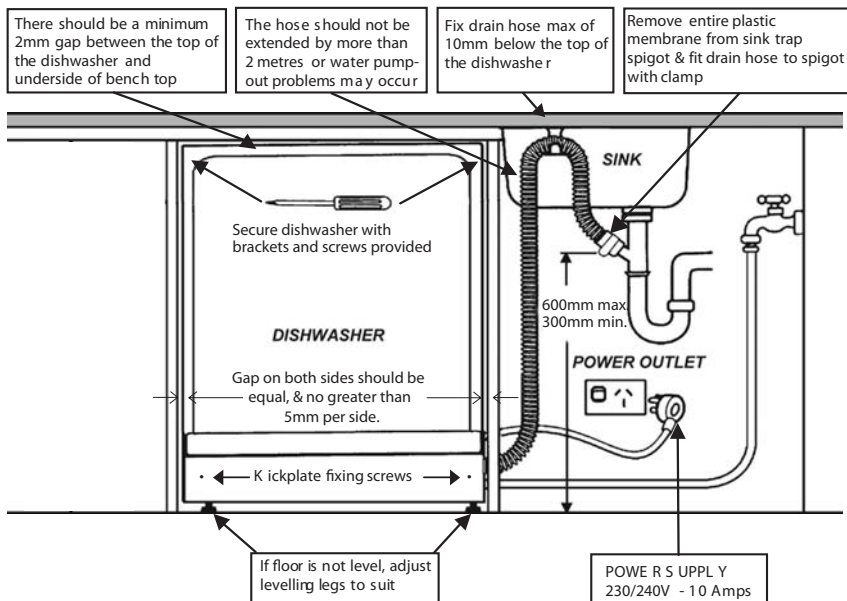
For these data, refer to the rating plate.
Write the necessary data here:
Model description :
Product number :
Serial number :

The cleaning results are not satisfactory	
The dishes are not clean	<ul style="list-style-type: none">• The selected washing program is not applicable for the type of load and soil.• The baskets are loaded incorrectly so that water cannot reach all surfaces.• Spray arms do not turn freely because of incorrect arrangement of the load.• The filters are dirty or not correctly installed.• The quantity of detergent is too little or missing.
The dishes are wet and dull	<ul style="list-style-type: none">• No rinse aid has been used.• The rinse aid dispenser is empty.
There are streaks, milky spots or a bluish coating on glasses and dishes	<ul style="list-style-type: none">• Decrease the rinse aid dosage.
Dry water drop signs on glasses and dishes	<ul style="list-style-type: none">• Increase rinse aid dosage.• The detergent can be the cause.

Technical data

Dimensions	Width cm	59,6
	Height cm	82 - 88
	Depth cm	58,2
Electrical connection - Voltage - Overall power - Fuse	Information on the electrical connection is given on the rating plate on the inner edge of the dishwasher door.	
Water supply pressure	Minimum	50 kPa (7 psi)
	Maximum	800 kPa (116 psi)
Capacity	Place settings	12

Installation



Inlet water supply

- Cold water pressure: 800 kPa max - 50 kPa min
- Water flow rate 10 L/minute min.
- If cold water pressure is in excess of 800 kPa, a pressure-reducing valve should be used. Check for leaks.

Warning! Make sure that mains plug is disconnected from the mains socket during installation.

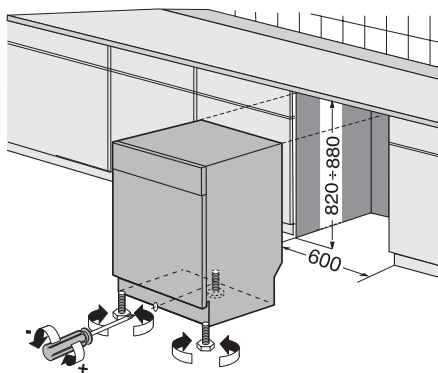
Install the appliance under a counter (kitchen worktop or sink).

If a repair is necessary, the appliance must be easily accessible for the engineer. Put the appliance adjacent to a water tap and drain.

For the venting of the appliance only water hoses and mains cable openings are necessary.

The appliance has adjustable feet to allow the adjustment of its height.

Make sure that the water inlet hose, the drain hose and the mains cable are not kinked or squashed, when you insert the appliance. Make sure that the dimensions of the recess agree with the given dimensions.



Adjusting the height of the appliance

Follow these steps to adjust the height of the appliance

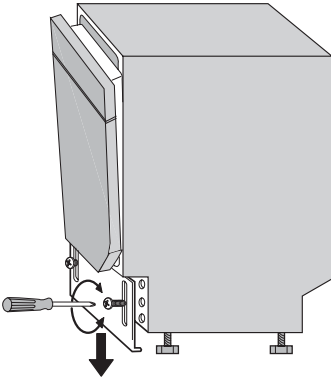
1. Loosen or tighten the two front feet.
2. Loosen and remove the adjustable plinth.

3. Adjust the rear foot. Turn the screw in the middle of the front kick-plate to the left or to the right.

Make sure that the appliance is level to close and seal the door correctly. If the level of the appliance is correct, the door does not catch on the sides of the cabinet. Loosen or tighten the adjustable feet until the appliance is level.

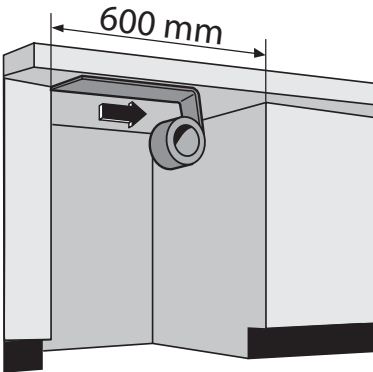
Adjusting the height of the plinth

If there is a space between the floor and the bottom of the appliance, you can lower the plinth to cover it.



Adhesive steam protection foil

Fit the steam protection on the front part of the worktop along the entire width.

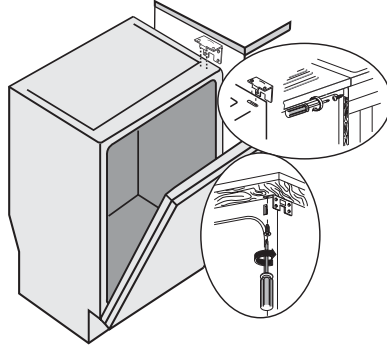


Fixing to the adjacent units



Warning! Use the supplied brackets to attach the appliance under the worktop or to the adjacent units, to prevent injury or damage.

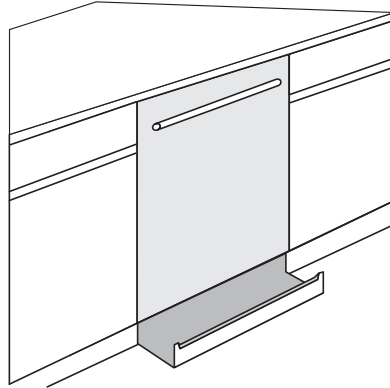
1. Fit the supplied angular brackets in the slots on the top of the appliance.
2. Use the supplied screws to secure the appliance in position (upwards or sideways). Make sure the screws are tightened.



Custom made kick-panel

For integrated appliances and full-stainless-steel door appliances.

We recommend that you make a custom made kick-panel that aligns your kitchen cabinets.



- A notched continuous panel is necessary to prevent door swing interference and to keep kick-panel alignment with adjacent units.
- Cut a notch in the kick-panel sufficient to let the door swing freely under the appliance.
- Make a check for interference. Open and close the door slowly. If the door touches the kick-panel, trim to prevent interference.

- Attach the kick-panel to adjacent cabinets so that if service is necessary you can remove it.

Water connection

Water inlet hose

Connect the appliance to a cold water supply.

Connect the inlet hose to a water tap with an external BSP thread spout of 3/4".

Inlet water supply

- Cold water pressure: 800 kPa max - 50 kPa min.
- Water flow rate 10 L / minute min.
- If cold water pressure is in excess of 800 kPa, a pressure reducing valve should be used. Check for leaks.

Caution! Always use new hoses when you connect the appliance to the water mains. Old hoses must not be used. The water inlet hose must be examined at an interval of twelve months for deterioration and replaced if necessary.

The water pressure must be in the limits (refer to 'Technical data'). Make sure that the local water authority gives you the average mains pressure in your area.

Make sure that there are no kinks in the water inlet hose and that the water inlet hose is not squashed or entangled.

Fit the hose nut correctly to prevent water leaks.

Caution! Do not connect the appliance to new pipes or pipes that have been not used for a long time. Let the water run for some minutes, then connect the inlet hose.

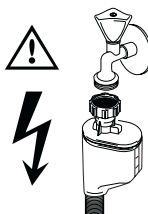
The water inlet hose is double-walled and has an inner mains cable and a safety valve. The water inlet hose is under pressure only while the water is running. If there is a leak in the water inlet hose, the safety valve interrupts the running water. Be careful when you install the water inlet hose.

Warning!

- The mains cable is in the double-walled inlet hose. Do not immerse the water inlet hose or the safety valve in water.

- Do not attempt to shorten the inlet hose.
- If the water inlet hose or the safety valve is damaged, immediately turn off the power and remove the mains plug from the mains socket.
- Only a qualified Service Engineer can replace the water inlet hose with safety valve.

Warning!



Dangerous voltage

i In order to pass the safety valve through the kitchen cabinets, an opening of at least 45mm x 90mm is needed.

Water drain hose

Use the supplied hose clamp to connect the water drain hose to the sink.

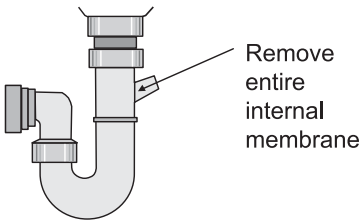
The highest point of the drain hose must be no more than 60 cm from the floor and must have a continuous fall to the plumbing connection.

The drain hose can be lengthened using additional lengths and connectors. These must be purchased from Electrolux Spare Parts. The extension length must not exceed 2 metres.

The drain hose must be free of kinks and obstructions.

Remove the sink plug when the appliance drains the water to prevent that the water goes back into the appliance.

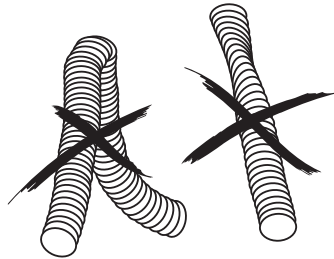
If you connect the water drain hose to a trap spigot under the sink, remove the plastic membrane. If you do not remove the membrane, remaining food can cause a blockage in the drain hose spigot.



i The appliance has a security feature to prevent dirty water going back into the appliance. If, the spigot of the sink has a 'non-return valve', this valve can cause the appliance to drain incorrectly. Remove the non-return valve.

! **Caution!** Make sure that the water couplings are tight to prevent water leakage.

Ensure that hoses are not crushed or kinked under or behind the appliance.



Once connected the inlet hose to the water tap, turn the tap on and check that there are no leaks.

Electrical connection

! **Warning!** Safety standards require the appliance to be earthed. Prior to using the appliance for the first time, ensure that the rated voltage and type of supply on the rating plate match that of the supply where the appliance is to be installed. The fuse rating is also to be found on the rating plate. Always plug the mains plug onto a correctly installed approved socket. Do not use multi-ways plugs, connectors and extension cables. This can constitute a fire hazard through overheating. If necessary, have the domestic wiring system socket replaced. If the mains ca-

ble has to be replaced, contact your local Customer Care centre. The mains plug must be accessible after the appliance has been installed. Never unplug the appliance by pulling on the cable. Always pull the plug. Test the appliance. Run a quick washing programme and ensure that the appliance fills with water, washes and drains with no leaks. The manufacturer accepts no liability for failure to observe the above safety precautions.

Environment concerns

The packaging materials are environmentally friendly and can be recycled. The plastic components are identified by markings, e.g. >PE<, >PS<, etc. Discard the packaging materials in the applicable container at the community waste disposal facilities.

! **Warning!** To discard the appliance, follow the procedure:

- Pull the mains plug out of the socket.
- Cut off the mains cable and mains plug and discard them.

- Discard the door catch. This prevents children closing themselves inside the appliance and endangering their lives.

Old appliance

Make sure that the appliance goes to the applicable collection point for recycle. Make sure that this appliance is discarded correctly. Inappropriate waste discard of the appliance causes negative consequences for the environment and human health. For more information about the recycle of this appliance, contact your local city office, your

household waste disposal service or the shop where you purchased the appliance.



Electrolux Warranty

FOR SALES IN AUSTRALIA AND NEW ZEALAND
APPLIANCE: WESTINGHOUSE DISHWASHERS

This document sets out the terms and conditions of the product warranties for Westinghouse Appliances. It is an important document. Please keep it with your proof of purchase documents in a safe place for future reference should there be a manufacturing defect in your Appliance. This warranty is in addition to other rights you may have under the Australian Consumer Law.

1. In this warranty:

- (a) 'ACL' or 'Australian Consumer Law' means Schedule 2 to the Competition and Consumer Act 2010;
- (b) 'Appliance' means any Electrolux product purchased by you and accompanied by this document;
- (c) 'ASC' means Electrolux's authorised serviced centres;
- (d) 'Westinghouse' is the brand controlled by Electrolux Home Products Pty Ltd of 163 O'Riordan Street, Mascot NSW 2020, ABN 51 004 762 341 in respect of Appliances purchased in Australia and Electrolux (NZ) Limited (collectively "Electrolux") of 3-5 Niall Burgess Road, Mount Wellington, in respect of Appliances purchased in New Zealand;
- (e) 'Warranty Period' means the period specified in clause 3 of this warranty;
- (f) 'you' means the purchaser of the Appliance not having purchased the Appliance for re-sale, and 'your' has a corresponding meaning.

2. Application: This warranty only applies to new Appliances, purchased and used in Australia or New Zealand and is in addition to (and does not exclude, restrict, or modify in any way) other rights and remedies under a law to which the Appliances or services relate, including any non-excludable statutory guarantees in Australia and New Zealand.

3. Warranty Period: Subject to these terms and conditions, this warranty continues for in Australia for a period of 24 months and in New Zealand for a period of 24 months, following the date of original purchase of the Appliance.

4. Repair or replace warranty: During the Warranty Period, Electrolux or its ASC will, at no extra charge if your Appliance is readily accessible for service, without special equipment and subject to these terms and conditions, repair or replace any parts which it considers to be defective. Electrolux may, in its absolute discretion, choose whether the remedy offered for a valid warranty claim is repair or replacement. Electrolux or its ASC may use refurbished parts to repair your Appliance. You agree that any replaced Appliances or parts become the property of Electrolux.

5. Travel and transportation costs: Subject to clause 7, Electrolux will bear the reasonable cost of transportation, travel and delivery of the Appliance to and from Electrolux or its ASC. Travel and transportation will be arranged by Electrolux as part of any valid warranty claim.

6. Proof of purchase is required before you can make a claim under this warranty.

7. Exclusions: You may not make a claim under this warranty unless the defect claimed is due to faulty or defective parts or workmanship. This warranty does not cover:

- (a) light globes, batteries, filters or similar perishable parts;
- (b) parts and Appliances not supplied by Electrolux;
- (c) cosmetic damage which does not affect the operation of the Appliance;

- (d) damage to the Appliance caused by:
 - (i) negligence or accident;
 - (ii) misuse or abuse, including failure to properly maintain or service;
 - (iii) improper, negligent or faulty servicing or repair works done by anyone other than an Electrolux authorised repairer or ASC;
 - (iv) normal wear and tear;
 - (v) power surges, electrical storm damage or incorrect power supply;
 - (vi) incomplete or improper installation;
 - (vii) incorrect, improper or inappropriate operation;
 - (viii) insect or vermin infestation;
 - (ix) failure to comply with any additional instructions supplied with the Appliance;

In addition, Electrolux is not liable under this warranty if:

- (a) the Appliance has been, or Electrolux reasonably believes that the Appliance has been, used for purposes other than those for which the Appliance was intended, including where the Appliance has been used for any non-domestic purpose;
- (b) the Appliance is modified without authority from Electrolux in writing;
- (c) the Appliance's serial number or warranty seal has been removed or defaced

8. How to claim under this warranty: To enquire about claiming under this warranty, please follow these steps:

- (a) carefully check the operating instructions, user manual and the terms of this warranty;
- (b) have the model and serial number of the Appliance available;
- (c) have the proof of purchase (e.g. an invoice) available;
- (d) telephone the numbers shown below.

9. Australia: For Appliances and services provided by Electrolux in Australia: Electrolux goods come with guarantees that cannot be excluded under the Australian Consumer Law. You are entitled to a replacement or refund for a major failure and for compensation for any other reasonably foreseeable loss or damage. You are also entitled to have the Appliance repaired or replaced if the Appliance fails to be of acceptable quality and the failure does not amount to a major failure. 'Acceptable quality' and 'major failure' have the same meaning as referred to in the ACL.

10. New Zealand: For Appliances and services provided by Electrolux in New Zealand, the Appliances come with a guarantee by Electrolux pursuant to the provisions of the Consumer Guarantees Act, the Sale of Goods Act and the Fair Trading Act. Where the Appliance was purchased in New Zealand for commercial purposes the Consumer Guarantee Act does not apply.

11. Confidentiality: You accept that if you make a warranty claim, Electrolux and its agents including ASC may exchange information in relation to you to enable Electrolux to meet its obligations under this warranty.

Important Notice

Before calling for service, please ensure that the steps listed in clause 8 above have been followed.

<p>FOR SERVICE or to find the address of your nearest authorised service centre in Australia PLEASE CALL 13 13 49 For the cost of a local call (Australia only)</p>	<p>AUSTRALIA ELECTROLUX HOME PRODUCTS 163 O'Riordan Street, Mascot NSW 2020 electrolux.com.au</p>	<p>FOR SPARE PARTS or to find the address of your nearest spare parts centre in Australia PLEASE 13 13 50 For the cost of a local call (Australia only)</p>
<p>FOR SERVICE or to find the address of your nearest authorised service centre in New Zealand PLEASE CALL 0800 10 66 10 (New Zealand only)</p>	<p>NEW ZEALAND ELECTROLUX (NZ) Limited 3-5 Niall Burgess Road, Mount Wellington electrolux.co.nz</p>	<p>FOR SPARE PARTS or to find the address of your nearest spare parts centre in New Zealand PLEASE 0800 10 66 20 (New Zealand only)</p>

www.electrolux.com

www.westinghouse.com.au