

238L single door freezer, silver with 3.0 star energy rating, full width freezer bins, movable twist & serve icemaker & Quick Freeze cooling boost



Product Details

FEATURES

Twist & Serve icemaker with bin, moveable

Full width freezer bins

Quick freeze function

Reversible door

BENEFITS

An organized freezer pantry

Have the best organised freezer in the neighbourhood. With 5 full width bins keep meat & chicken in one, frozen vegetables in another and a full drawer for ice-cream. Boxes can lie neatly on the shelves for quick and easy access

Freeze it Quickly

Load your freezer after a grocery shop, activate the Quick Freeze function to lower the temperature faster than normal, freezing your food faster and preserving it longer.

Reverse the door

With a reversible door, position your fridge as either a left or right opening to suit your kitchen

Specifications

PRODUCT PROFILE

Domestic warranty details (yrs)	2
Refrigerator Type	vertical freezer
Exterior door finish	Arctic silver
Handle design	bar handle
Cooling system	frost free
Freezer door opening	left
Refrigerant	R600a
Compressor	Fixed-speed

DIMENSIONS

Total height (mm)	1720
Cabinet height (mm)	1700
Total width (mm)	597
Cabinet width (mm)	595
Total depth (mm)	652
Cabinet depth (mm)	510
Depth door open 90degree (mm)	1115
Air space above cabinet (mm)	100
Freezer Compartment Capacity (L) - AS/NZS 4474.1 2007 (IEC 62552-2015) *	238
Total Capacity (L) - AS/NZS 4474.1 2007 (IEC 62552-2015) *	238
Height adjustable feet	Yes

ENERGY

Energy Star Rating - 3.0
AS/NZS 4474.1 2007 (IEC
62552- 2015) *

Energy Consumption 279
(kWh/year) - AS/NZS
4474.1 2007 (IEC 62552-
2015) *

FREEZER COMPARTMENT

ICE FACILITY

Twist ice and serve 1

BASKET/DRAWER

Full width plastic basket 5

REFRIGERATOR SYSTEM

Controls electronic (with display)

Controls location internal

Controls type touch

Control functions eco mode,quick freeze
function,multi-flow air
delivery,lock

Door alarm freezer

SHELVING

Shelving glass shelf

Number of shelves 2

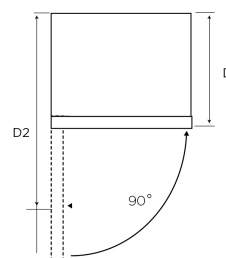
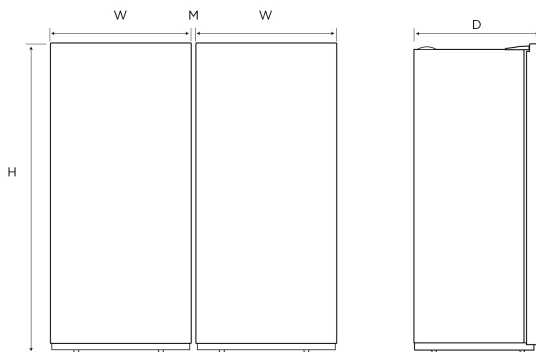
LIGHTING

Main light LED

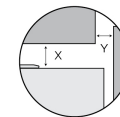
Dimensions

WRB5004SC/WC
WFB4204SC/WC
WRB3504AB/WB

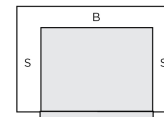
WFB2804AB/WB
WRM2400WF
WFM1700WE



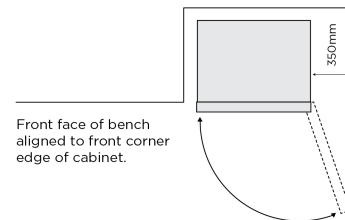
Minimum Recommended Airspaces



If you have a cupboard above the refrigerator with a rear gap of less than 100mm (Y), recommended minimum clearance at the top of the refrigerator increases from 30mm to 70mm (X).



Please note: Doors are designed to sit proud of cabinetry (not flush).



Dimensions	Product Height (H)	Product Width (W)	Product Depth (D)	Product Depth (D2) (Door Open)
WRB5004SC/WC	1725	699	641	1360
WFB4204SC/WC	1725	699	769	1360
WRB3504AB/WB	1720	597	652	1115
WFB2804AB/WB	1720	595	652	1115
WRM2400WF	1434	550	545	1050
WFM1700WE	1434	550	560	1065

Airspace	Side - both (S)	Top	Behind (B)	Middle (M)
WRB5004SC/ WC	30	30	50	21
WFB4204SC/ WC	30	30	50	21
WRB3504AB/ WB	100	100	75	100
WFB2804AB/WB	100	100	75	100
WRM2400WF	30	30	50	30
WFM1700WE	30	30	50	30

IMPORTANT

These dimensions are a guide only. All measurements are in millimetres (mm). For complete installation instructions, refer to the manual provided with product.
© 2023 Electrolux Home Products Pty Ltd. ABN 51 004 762 341. W_DIM_SD_Mar23

Terms and Conditions

IMPORTANT

This is a guide of product dimensions only. For complete installation instructions, refer to the manual provided with product.

PRODUCT INFORMATION

The descriptors and illustrations in this publication apply to the specific products and models described as at the date of issue. Under our policy of continuous product development, product specifications may change without notice. Prospective purchasers should therefore check with their retailer to ensure this publication correctly describes the products that are being offered for sale. All information supplied is to be used for general reference purposes only and is on the understanding that Electrolux Home Products Pty Ltd (Australia) and Electrolux (NZ) Ltd (New Zealand) will not be liable for any loss, liability or damage of whatever kind arising as a result of reliance on such information. Colours of products illustrated are as close as printing limitations allow. Electrolux will at all times comply with its obligations pursuant to law including Trade Practices (Australian Consumer Law) Act and Regulations.

WARRANTY

This warranty only applies to Appliances purchased and used in Australia or New Zealand and used in normal domestic applications and is in addition to (and does not exclude, restrict, or modify in any way) any non-excludable statutory warranties in Australia or New Zealand. All warranties are subject to the conditions set out in the warranty card accompanying the product when purchased.

ELECTROLUX HOME PRODUCTS AUSTRALIA

telephone: 1300 363 640

fax: 1800 350 067

email: customercare@electrolux.com.au

web: www.electrolux.com.au

ELECTROLUX HOME PRODUCTS NEW ZEALAND

telephone: 09 573 2230

fax: 09 573 2221

email: customercare@electrolux.co.nz

web: www.electrolux.co.nz